



PATTERN DIGEST 2023



DUNLOP HISTORY

"The history of Dunlop is the history of tires."
 Since John Boyd Dunlop, a veterinarian in Ireland, invented the world's first pneumatic tire for his son, Dunlop has been a pioneer for tires and the world.

- 1888 John Boyd Dunlop, an Irish Veterinarian, commercialized the first pneumatic tire.
- 1905 Developed the first tire for automobiles with a lateral groove pattern on the tread.
- 1909 Founded Japan branch of Dunlop Rubber (Far East), Ltd..
- 1913 Produced Japan's first automobile tire.
- 1924 Registered first win at Le Mans 24-Hour Endurance Race.
- 1947 A Dunlop equipped car established a new world record of 634km/h.
- 1954 Produced the first tubeless tire in Japan.
- 1956 Participated in the Formula 1 Grand Prix.
- 1960 Introduced the phenomenon of Hydroplaning to the world.
- 1991 A Japanese car fitted with Dunlop got his first victory at Le Mans 24-Hour Endurance Race.
- 1998 Launched "Digi-Tires" developed with Digital Rolling Simulation Technology.
- 2006 Released the world's first special sound absorbing Silent Core loaded tire.
- 2008 Released new generation eco tire with 97% non-petroleum natural resource usage ratio.
- 2012 Completed NEO-T01, High precision metal core manufacturing system pursuing "ultrahigh precision" in tire manufacturing technology.
- 2013 Released "ENASAVE 100," the world's first 100% fossil resource-free tires.
- 2015 Completed development of "ADVANCED 4D NANO DESIGN" new materials development technology.
- 2016 Released our best studless tire, the WINTER MAXX 02, which managed to achieve both "longest lasting performance" and our "best ever on-ice performance".
- 2017 Won a series champion in the 2016-2017 FIM World Endurance Championship Series with a Dunlop equipped motorbike.
- 2018 130th anniversary since the practical application of Dunlop's pneumatic tire.
- 2019 Established "Tyre Leap AI Analysis," A New AI-Based Technology Designed to Accelerate the Development of Tire Performance Sustaining Technology.
- 2020 Racing Team Equipped with DUNLOP Tires Crowned World Champions In 2019-2020 FIM Endurance World Championship.



16

PATTERN DIGEST 2023

CONTENTS

- DUNLOP HISTORY 1 - 2
- PATTERN MAP 3 - 4
- GENERAL INFORMATION 5 - 8
- PASSENGER CAR TIRES 9 - 26
- 4x4 [4WD] & SUV TIRES 27 - 40
- LIGHT TRUCK TIRES 41 - 44
- TRUCK & BUS TIRES 45 - 70
- OE INFORMATION 71 - 78
- SAFETY INFORMATION 79 - 80
- CORPORATE DATA 81 - 82

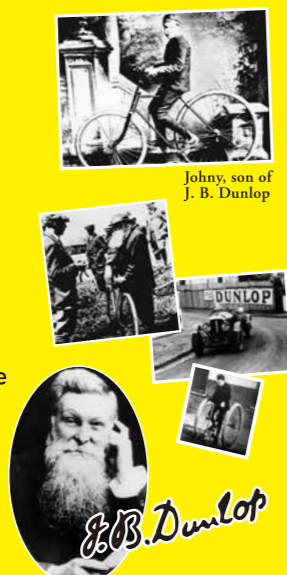
The origin DUNLOP

In 1888, John Boyd Dunlop, an Irish Veterinarian invented the first practical pneumatic tire.

J. B. Dunlop experimented ways to ease the discomfort of his son's tricycle and eventually came up with the air-filled or pneumatic tire.

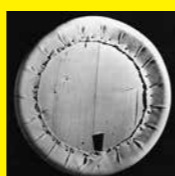
From there, this remarkable new idea has made a great contribution to the development of contemporary automobile society.

Since then, Dunlop has flourished in the world for more than 130 years.



Philosophy of Sumitomo Rubber Group

Sumitomo Rubber Group strives our best to achieve workers and consumers' satisfaction, enrich the lives of people globally, and thereby contribute to the sustainable development of society. We have a compelling desire to create a new life value for all, both now and in the future.



【Left】
The first domestically made tire in Japan

【Right】
SP SPORT MAXX 060+ Dunlop flagship tire.

Related Business of Sumitomo Rubber Group



Precision rubber parts for office equipment



Rubber parts for medical applications



Golf and Tennis goods

Headquarters of Sumitomo Rubber Group in Kobe, Japan.

Dunlop, a brand originally from Europe which pioneered the technology of pneumatic tire is now offered by Sumitomo Rubber Group, an established company with over 110 years history.



SEDAN



SP TOURING R1



SP SPORT LM705

NEW



VEURO VE304



SP SPORT MAXX 060+

4x4(4WD)&SUV



SP SPORT MAXX 060+

NEW



GRANDTREK PT5



GRANDTREK AT20



GRANDTREK AT22

SPORT



DIREZZA DZ102



SP SPORT MAXX 060+



DIREZZA ZII

4x4(4WD)&SUV



GRANDTREK AT25



GRANDTREK AT5

HATCHBACK



SP TOURING R1



SP SPORT LM705

NEW



VEURO VE304



SP SPORT MAXX 060+

PICK UP



GRANDTREK AT20



GRANDTREK AT22



GRANDTREK AT23



GRANDTREK AT25

CITYCAR



SP TOURING R1

PICK UP



GRANDTREK AT5



GRANDTREK AT36



① WIDE PATTERN ② NARROW PATTERN



GRANDTREK MT2

PASSENGER CAR

4x4(4WD) & SUV

LIGHT TRUCK

TRUCK & BUS

OE INFORMATION

SAFETY INFORMATION

PASSENGER CAR

4x4(4WD) & SUV

LIGHT TRUCK

TRUCK & BUS

OE INFORMATION

SAFETY INFORMATION

GENERAL INFORMATION

DUNLOP offers a wide range of tires.

This PATTERN DIGEST is designed to help users select the most suitable tires to meet their needs.

Useful information is included to assist users in selecting appropriate tire specifications for their vehicles with ease.

Inquiries and requests for additional information should be directed to the nearest DUNLOP dealers or DUNLOP representatives.

DUNLOP tires are designed according to major industry standards such as JATMA (Japan Automobile Tire Manufacturers Association),

TRA (Tire and Rim Association) or ETRTO (European Tire and Rim Technical Organization).

BASIC TIRE FUNCTIONS

Basic tire functions are the capability to support a given load up to a given speed and to transmit the driving, steering and braking forces to the ground. Tire performance may be varied depending on road condition and driving method.

DIMENSIONS

RIM WIDTH

Distance between the flanges of the rim.

SECTION HEIGHT

Half the distance between the overall diameter and the nominal rim diameter.

SECTION WIDTH

The distance between the outsides of the sidewalls of an inflated tire excluding any labeling (markings), decorations, or protective bands or ribs.

OVERALL WIDTH

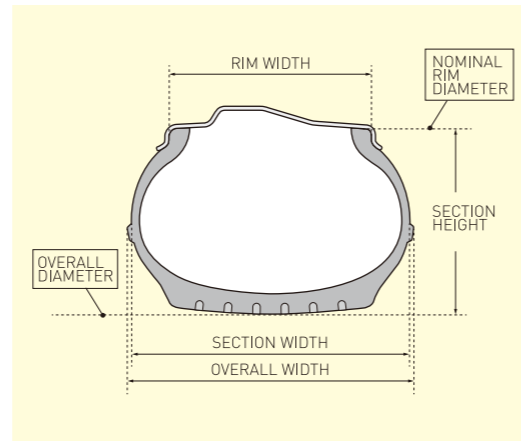
The distance between the outsides of the sidewalls of an inflated tire including any labeling (markings), decorations, or protective bands or ribs.

OVERALL DIAMETER

The diameter of an inflated tire at the outermost surface of the tread.

NOMINAL ASPECT RATIO

The percentage ratio of the section height to the section width of the tire on its design rim.



NOMINAL RIM DIAMETER

It is a size code for reference only, as indicated in the tire and rim designation.

SIDEWALL DESCRIPTION

SERVICE DESCRIPTION

In addition to the Tire Size Designation a tire may include a Service Description consisting of a load index (or two Load Indices in the case of single/dual fitments) and a speed symbol.

INFLATION PRESSURE

Inflation pressure means the pressure measured with the tire at ambient temperature without any pressure build-up due to tire usage.

SPEED SYMBOL

The SPEED SYMBOL indicates the maximum speed at which the tire can carry the load corresponding to its Load Index under service conditions specified by the tire manufacturer.

REINFORCED (EXTRA LOAD)

Passenger car tires designated for loads and inflation pressure higher than the Standard versions.

LOAD CAPACITY

The maximum load a tire is permitted to carry under specified operating conditions.

M+S

Tires specifically designed for mud and snow (Winter) use. MS, M&S, M.S and M-S are also permitted.

LOAD INDEX

The LOAD INDEX is a numerical code associated with the maximum load a tire is permitted to carry at the speed indicated by its Speed Symbol under service conditions specified by the tire manufacturer.

TEMPORARY USE ONLY

Passenger car tires intended for temporary use as spare in only one position at a time.

SPEED SYMBOL

SPEED SYMBOL	MAX.SPEED (km/h)
A1	5
A2	10
A3	15
A4	20
A5	25
A6	30
A7	35
A8	40
B	50
C	60
D	65
E	70
F	80
G	90
J	100
K	110
L	120
M	130
N	140
P	150
Q	160
R	170
S	180
T	190
U	200
H	210
V	240
W	270
Y	300
(Y)	above 300
Speed Category Marking	
ZR	above 240

LOAD INDEX

LI	kg	LI	kg	LI	kg	LI	kg	LI	kg	LI	kg	LI	kg
0	45.0	40	140	80	450	120	1,400	160	4,500	200	14,000	240	45,000
1	46.2	41	145	81	462	121	1,450	161	4,625	201	14,500	241	46,250
2	47.5	42	150	82	475	122	1,500	162	4,750	202	15,000	242	47,500
3	48.7	43	155	83	487	123	1,550	163	4,875	203	15,500	243	48,750
4	50.0	44	160	84	500	124	1,600	164	5,000	204	16,000	244	50,000
5	51.5	45	165	85	515	125	1,650	165	5,150	205	16,500	245	51,500
6	53.0	46	170	86	530	126	1,700	166	5,300	206	17,000	246	53,000
7	54.5	47	175	87	545	127	1,750	167	5,450	207	17,500	247	54,500
8	56.0	48	180	88	560	128	1,800	168	5,600	208	18,000	248	56,000
9	58.0	49	185	89	580	129	1,850	169	5,800	209	18,500	249	58,000
10	60.0	50	190	90	600	130	1,900	170	6,000	210	19,000	250	60,000
11	61.5	51	195	91	615	131	1,950	171	6,150	211	19,500	251	61,500
12	63.0	52	200	92	630	132	2,000	172	6,300	212	20,000	252	63,000
13	65.0	53	206	93	650	133	2,060	173	6,500	213	20,600	253	65,000
14	67.0	54	212	94	670	134	2,120	174	6,700	214	21,200	254	67,000
15	69.0	55	218	95	690	135	2,180	175	6,900	215	21,800	255	69,000
16	71.0	56	224	96	710	136	2,240	176	7,100	216	22,400	256	71,000
17	73.0	57	230	97	730	137	2,300	177	7,300	217	23,000	257	73,000
18	75.0	58	236	98	750	138	2,360	178	7,500	218	23,600	258	75,000
19	77.5	59	243	99	775	139	2,430	179	7,750	219	24,300	259	77,500
20	80.0	60	250	100	800	140	2,500	180	8,000	220	25,000	260	80,000
21	82.5	61	257	101	825	141	2,575	181	8,250	221	25,750	261	82,500
22	85.0	62	265	102	850	142	2,650	182	8,500	222	26,500	262	85,000
23	87.5	63	272	103	875	143	2,725	183	8,750	223	27,250	263	87,500
24	90.0	64	280	104	900	144	2,800	184	9,000	224	28,000	264	90,000
25	92.5	65	290	105	925	145	2,900	185	9,250	225	29,000	265	92,500
26	95.0	66	300	106	950	146	3,000	186	9,500	226	30,000	266	95,000
27	97.5	67	307	107	975	147	3,075	187	9,750	227	30,750	267	97,500
28	100	68	315	108	1,000	148	3,150	188	10,000	228	31,500	268	100,000
29	103	69	325	109	1,030	149	3,250	189	10,300	229	32,500	269	103,000
30	106	70	335	110	1,060	150	3,350	190	10,600	230	33,500	270	106,000
31	109	71	345	111	1,090	151	3,450	191	10,900	231	34,500	271	109,000
32	112	72	355	112	1,120	152	3,550	192	11,200	232	35,500	272	112,000
33	115	73	365	113	1,150	153	3,650	193	11,500	233	36,500	273	115,000
34	118	74	375	114	1,180	154	3,750	194	11,800	234	37,500	274	118,000
35	121	75	387	115	1,215	155	3,875	195	12,150	235	38,750	275	121,000
36	125	76	400	116	1,250	156	4,000	196	12,500	236	40,000	276	125,000
37	128	77	412	117	1,285	157	4,125	197	12,850	237	41,250	277	128,000
38	132	78	425	118	1,320	158	4,250	198	13,200	238	42,500	278	132,000
39	136	79	437	119	1,360	159	4,375	199	13,600	239	43,750	279	136,000

SEARCHING CLUE

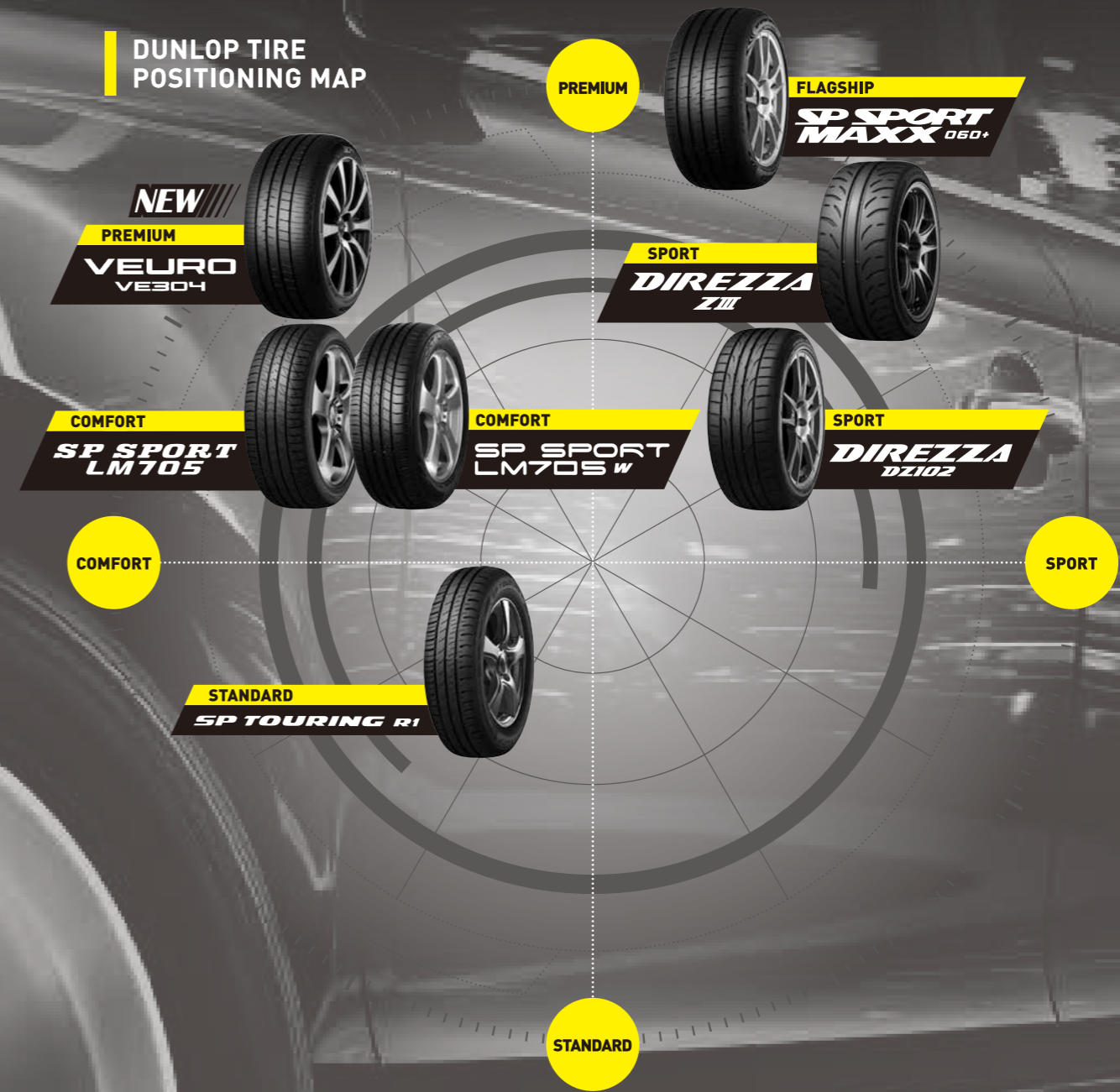
Please refer to the following guidelines to find the tires you are looking for. For more details, separate guidelines are available in each category.

REMARKS	
WLT Raised White Letter	OWL Outlined White Letter
BLT Raised Black Letter	
TT Tube Type	E-No. E Number
TL Tubeless Type	RF Reinforced
MFS Maximum Flange Shield	WSL White Slim Line
BLK Black Sidewall	LI Load Index
PR Ply Rating	SS Speed Symbol
XL Extra Load	
SL Slim Line	

NOTICE: All the information in this booklet is subject to change with or without notice.

PASSENGER CAR CAR TIRES

DUNLOP TIRE POSITIONING MAP



SP SPORT MAXX 060+

FLAGSHIP

- SP SPORT MAXX 060+ is the successor pattern of SP SPORT MAXX 050+ and the new flagship product of DUNLOP.
- The application of a new compound with enhanced silica dispersibility led to improved fuel efficiency and significantly improved tire life.
- The asymmetric design of SP SPORT MAXX 060+ gives excellent performance on Dry & Wet surfaces.



**SP SPORT
MAXX 060+**

Rim (inch)	Aspect ratio (%)	Tire Size	Load Index	Speed Symbol	XL or RF	Sidewall Style	TL or TT	E-No.	Overall Diam. (mm)	Section Width (mm)	Measuring Rim Width (inch)	Approved Rim Width (inch)	Tread Depth (mm)
21	35	295/35R21	107	Y	○	BLK	TL	○	742	301	10.50	10.00 - 11.50	8.1
	40	295/40R21	111	Y	○	BLK	TL	○	774	301	10.50	10.00 - 11.50	8.1
20	45	275/45R21	110	Y	○	BLK	TL	○	784	273	9.00	8.50 - 10.50	8.1
	30	275/30R20	97	Y	○	BLK	TL	○	675	278	9.50	9.00 - 10.00	8.1
35	245/35R20	95	Y	○	BLK	TL	○	683	248	8.50	8.00 - 9.50	8.1	
	255/35R20	97	Y	○	BLK	TL	○	689	260	9.00	8.50 - 10.00	8.1	
40	275/35R20	102	Y	○	BLK	TL	○	703	278	9.50	9.00 - 11.00	8.1	
	315/35R20	110	Y	○	BLK	TL	○	731	320	11.00	10.50 - 12.50	8.2	
45	275/40R20	106	Y	○	BLK	TL	○	731	278	9.50	9.00 - 11.00	8.1	
	245/45R20	103	Y	○	BLK	TL	○	731	243	8.00	7.50 - 9.00	8.0	
50	255/45R20	105	Y	○	BLK	TL	○	741	255	8.50	8.00 - 9.50	8.0	
	275/45R20	110	Y	○	BLK	TL	○	759	273	9.00	8.50 - 10.50	8.1	
55	255/50R20	109	Y	○	BLK	TL	○	769	265	8.00	7.00 - 9.00	8.0	
	265/50R20	111	Y	○	BLK	TL	○	779	277	8.50	7.50 - 9.50	8.0	
19	275/50R20	109	W	○	BLK	TL	○	789	284	8.50	7.50 - 9.50	8.1	
	235/55R20	102	V	○	BLK	TL	○	771	245	7.50	6.50 - 8.50	7.8	
35	245/35R19	93	Y	○	BLK	TL	○	658	248	8.50	8.00 - 9.50	8.1	
	255/35R19	96	Y	○	BLK	TL	○	664	260	9.00	8.50 - 10.00	8.1	
40	275/35R19	100	Y	○	BLK	TL	○	678	278	9.50	9.00 - 11.00	8.1	
	235/40R19	96	Y	○	BLK	TL	○	674	241	8.50	8.00 - 9.50	7.9	
45	245/40R19	98	Y	○	BLK	TL	○	682	248	8.50	8.00 - 9.50	8.0	
	255/40R19	100	Y	○	BLK	TL	○	690	260	9.00	8.50 - 10.00	8.0	
50	275/40R19	105	Y	○	BLK	TL	○	706	278	9.50	9.00 - 11.00	8.1	
	225/45R19	92	W	○	BLK	TL	○	688	225	7.50	7.00 - 8.50	7.9	
55	245/45R19	102	Y	○	BLK	TL	○	706	243	8.00	7.50 - 9.00	8.0	
	255/50R19	107	Y	○	BLK	TL	○	744	265	8.00	7.00 - 9.00	8.0	
18	265/50R19	110	Y	○	BLK	TL	○	754	277	8.50	7.50 - 9.50	8.0	
	235/55R19	105	Y	○	BLK	TL	○	746	245	7.50	6.50 - 8.50	7.8	
35	255/55R19	111	W	○	BLK	TL	○	768	265	8.00	7.00 - 9.00	7.9	
	255/35R18	94	Y	○	BLK	TL	○	638	260	9.00	8.50 - 10.00	8.1	
40	265/35R18	97	Y	○	BLK	TL	○	646	271	9.50	9.00 - 10.50	8.1	
	225/40R18	92	Y	○	BLK	TL	○	640	230	8.00	7.50 - 9.00	7.9	
45	235/40R18	95	Y	○	BLK	TL	○	648	241	8.50	8.00 - 9.50	7.9	
	245/40R18	97	Y	○	BLK	TL	○	656	248	8.50	8.00 - 9.50	8.0	
50	225/45R18	95	Y	○	BLK	TL	○	662	225	7.50	7.00 - 8.50	7.9	
	235/45R18	94	Y	○	BLK	TL	○	672	236	8.00	7.50 - 9.00	7.9	
55	235/45R18	98	Y	○	BLK	TL	○	672	236	8.00	7.50 - 9.00	7.9	
	245/45R18	100	Y	○	BLK	TL	○	680	243	8.00	7.50 - 9.00	8.0	
60	255/45R18	103	Y	○	BLK	TL	○	690	255	8.50	8.00 - 9.50	8.0	
	235/50R18	101	Y	○	BLK	TL	○	698	245	7.50	6.50 - 8.50	7.9	
55	245/50R18	100	Y	○	BLK	TL	○	708	253	7.50	7.00 - 8.50	8.0	
	225/55R18	102	Y	○	BLK	TL	○	710	233	7.00	6.00 - 8.00	7.8	
60	255/55R18	109	Y	○	BLK	TL	○	742	265	8.00	7.00 - 9.00	7.9	
	235/60R18	107	W	○	BLK	TL	○	744	240	7.00	6.50 - 8.50	7.9	
		245/60R18	105	V	○	BLK	TL	○	756	248	7.00	7.00 - 8.50	8.0

Continued next page.

SP SPORT MAXX 060+

FLAGSHIP

Rim (inch)	Aspect ratio (%)	Tire Size	Load Index	Speed Symbol	XL or RF	Sidewall Style	TL or TT	E-No.	Overall Diam. (mm)	Section Width (mm)	Measuring Rim Width (inch)	Approved Rim Width (inch)	Tread Depth (mm)
17	45	205/45R17	88	Y	○	BLK	TL	○	619	206	7.00	6.50 - 7.50	7.7
		215/45R17	91	Y	○	BLK	TL	○	629	213	7.00	7.00 - 8.00	7.7
		225/45R17	94	Y	○	BLK	TL	○	637	225	7.50	7.00 - 8.50	7.9
		235/45R17	97	Y	○	BLK	TL	○	647	236	8.00	7.50 - 9.00	7.9
50	45	245/45R17	99	Y	○	BLK	TL	○	655	243	8.00	7.50 - 9.00	8.0
		205/50R17	93	Y	○	BLK	TL	○	641	214	6.50	5.50 - 7.50	7.7
		215/50R17	95	Y	○	BLK	TL	○	651	226	7.00	6.00 - 7.50	7.7
		225/50R17	98	Y	○	BLK	TL	○	661	233	7.00	6.00 - 8.00	7.9
55	45	215/55R17	94	Y	○	BLK	TL	○	673	226	7.00	6.00 - 7.50	7.8
		225/55R17	101	Y	○	BLK	TL	○	685	233	7.00	6.00 - 8.00	7.8
		235/55R17	103	Y	○	BLK	TL	○	695	245	7.50	6.50 - 8.50	7.8
65	55	235/65R17	108	W	○	BLK	TL	○	745	240	7.00	6.50 - 8.50	8.0
		205/55R16	94	W	○	BLK	TL	○	635	214	6.50	5.50 - 7.50	7.7
16	55	215/55R16	97	Y	○	BLK	TL	○	647	226	7.00	6.00 - 7.50	7.8



DIREZZA DZ102

SPORT

DIREZZA DZ102 is Dunlop's ultra high performance summer tire developed for sports car, sports coupe and performance sedan driving enthusiasts. By adopting Dunlop's own DRS-II (Digital Rolling System) sports simulation technology, DIREZZA DZ102 delivers high level performance on dry and wet roads. Moreover, optimizing theory on groove distribution and angle in addition to existing chaos arrangement theory have resulted in "Low Noise Pattern".

DIREZZA DZ102



Rim (inch)	Aspect ratio (%)	Tire Size	Load Index	Speed Symbol	XL or RF	Sidewall Style	TL or TT	E-No.	Overall Diam. (mm)	Section Width (mm)	Rim Width Measuring (inch)	Approved (inch)	Tread Depth (mm)
20	35	245/35ZR20	95	W	○	BLK	TL	○	680	248	8.50	8.00 - 9.50	7.8
		255/35R20	97	W	○	BLK	TL	○	686	260	9.00	8.50 - 10.00	7.8
		275/35R20	102	W	○	BLK	TL	○	700	278	9.50	9.00 - 11.00	7.8
19	40	245/40ZR20	99	W	○	BLK	TL	○	704	248	8.50	8.00 - 9.50	7.8
		265/30R19	93	W	○	BLK	TL	○	643	271	9.50	9.00 - 10.00	7.8
	35	275/30R19	96	W	○	BLK	TL	○	649	278	9.50	9.00 - 10.00	7.8
		225/35R19	88	W	○	BLK	TL	○	641	230	8.00	7.50 - 9.00	7.8
18	40	235/35R19	91	W	○	BLK	TL	○	647	241	8.50	8.00 - 9.50	7.8
		245/35R19	93	W	○	BLK	TL	○	655	248	8.50	8.00 - 9.50	7.8
		245/40ZR19	94	W	○	BLK	TL	○	679	248	8.50	8.00 - 9.50	7.8
	35	215/35R18	84	W	○	BLK	TL	○	607	218	7.50	7.00 - 8.50	7.7
		255/35R18	94	W	○	BLK	TL	○	635	260	9.00	8.50 - 10.00	7.8
		265/35R18	97	W	○	BLK	TL	○	643	271	9.50	9.00 - 10.50	7.8
	40	275/35R18	95	W	○	BLK	TL	○	649	278	9.50	9.00 - 11.00	7.8
		225/40R18	92	W	○	BLK	TL	○	637	230	8.00	7.50 - 9.00	7.8
		235/40R18	95	W	○	BLK	TL	○	645	241	8.50	8.00 - 9.50	7.8
245/40R18		97	W	○	BLK	TL	○	653	248	8.50	8.00 - 9.50	7.8	
275/40R18		99	W	○	BLK	TL	○	677	278	9.50	9.00 - 11.00	7.8	
225/45R18		95	W	○	BLK	TL	○	659	225	7.50	7.00 - 8.50	7.8	
45	245/45R18	100	W	○	BLK	TL	○	677	243	8.00	7.50 - 9.00	7.8	
	255/45ZR18	99	W	○	BLK	TL	○	687	255	8.50	8.00 - 9.50	7.8	
	235/50ZR18	97	W	○	BLK	TL	○	693	245	7.50	6.50 - 8.50	7.9	
17	40	205/40R17	84	W	○	BLK	TL	○	596	212	7.50	7.00 - 8.00	7.7
		215/40R17	87	W	○	BLK	TL	○	604	218	7.50	7.00 - 8.50	7.7
		245/40R17	91	W	○	BLK	TL	○	628	248	8.50	8.00 - 9.50	7.8
	45	255/40R17	94	W	○	BLK	TL	○	636	260	9.00	8.50 - 10.00	7.8
		205/45R17	88	W	○	BLK	TL	○	616	206	7.00	6.50 - 7.50	7.7
50	215/45R17	91	W	○	BLK	TL	○	626	213	7.00	7.00 - 8.00	7.7	
	225/45R17	94	W	○	BLK	TL	○	634	225	7.50	7.00 - 8.50	7.8	
	235/45R17	94	W	○	BLK	TL	○	644	236	8.00	7.50 - 9.00	7.8	
	245/45R17	95	W	○	BLK	TL	○	652	243	8.00	7.50 - 9.00	7.8	
	205/50ZR17	93	W	○	BLK	TL	○	638	214	6.50	5.50 - 7.50	7.7	
	215/50R17	91	V	○	BLK	TL	○	648	226	7.00	6.00 - 7.50	7.8	
	225/50R17	94	W	○	BLK	TL	○	658	233	7.00	6.00 - 8.00	7.8	
55	235/50ZR17	96	W	○	BLK	TL	○	668	245	7.50	6.50 - 8.50	7.8	
	215/55R17	94	V	○	BLK	TL	○	668	226	7.00	6.00 - 7.50	7.8	
	235/55ZR17	99	W	○	BLK	TL	○	690	245	7.50	6.50 - 8.50	7.8	
16	45	195/45R16	84	W	○	BLK	TL	○	582	195	6.50	6.00 - 7.50	7.6
		205/45R16	87	W	○	BLK	TL	○	590	206	7.00	6.50 - 7.50	7.7

Continued next page.

DIREZZA DZ102

SPORT

Rim (inch)	Aspect ratio (%)	Tire Size	Load Index	Speed Symbol	XL or RF	Sidewall Style	TL or TT	E-No.	Overall Diam. (mm)	Section Width (mm)	Rim Width Measuring (inch)	Approved (inch)	Tread Depth (mm)
16	50	195/50R16	84	V		BLK	TL	○	602	201	6.00	5.50 - 7.00	7.6
		205/50R16	87	V		BLK	TL	○	612	214	6.50	5.50 - 7.50	7.7
		215/50R16	90	V		BLK	TL	○	622	226	7.00	6.00 - 7.50	7.8
		225/50R16	92	V		BLK	TL	○	632	233	7.00	6.00 - 8.00	7.8
55		205/55R16	91	V		BLK	TL	○	632	214	6.50	5.50 - 7.50	7.7
		215/55R16	93	V		BLK	TL	○	642	226	7.00	6.00 - 7.50	7.8
		225/55R16	95	V		BLK	TL	○	654	233	7.00	6.00 - 8.00	7.8
15	50	195/50R15	82	V		BLK	TL	○	577	201	6.00	5.50 - 7.00	7.6
		205/50R15	86	V		BLK	TL	○	587	214	6.50	5.50 - 7.50	7.7
	55	195/55R15	85	V		BLK	TL	○	595	201	6.00	5.50 - 7.00	7.6
		205/55R15	88	V		BLK	TL	○	607	214	6.50	5.50 - 7.50	7.6
60	195/60R15	88	H		BLK	TL		615	201	6.00	5.50 - 7.00	7.7	
	205/60R15	91	H		BLK	TL		627	209	6.00	5.50 - 7.50	7.8	
14	60	185/60R14	82	H		BLK	TL	○	578	189	5.50	5.00 - 6.50	7.5

SP SPORT LM705

COMFORT

SP SPORT LM705 is a well-balanced touring tire ideal for sedan cars. Offering long mileage, quiet & comfortable drive, and enhanced handling capabilities, these touring tires emphasize on providing outstanding performance on highways and city roads. SP SPORT LM705 is known for being the very good tires for quiet rides as they absorb the vibrations caused by jerks or bumps on the road, which reduces the noise inside the cabin for a smooth ride.



SP SPORT LM705

Rim (inch)	Aspect ratio (%)	Tire Size	Load Index	Speed Symbol	XL or RF	Sidewall Style	TL or TT	E-No.	Overall Diam. (mm)	Section Width (mm)	Rim Width Measuring (inch)	Approved (inch)	Tread Depth (mm)
20	40	245/40R20	95	W		BLK	TL	○	707	251	8.50	8.00 - 9.50	7.8
	45	245/45R19	98	W		BLK	TL	○	706	246	8.00	7.50 - 9.00	7.8
19	40	245/40R19	98	W	○	BLK	TL	○	682	251	8.50	8.00 - 9.50	7.8
	55	235/55R18	100	V		BLK	TL	○	719	248	7.50	6.50 - 8.50	8.0
		235/50R18	97	W		BLK	TL	○	698	248	7.50	6.50 - 8.50	7.8
	50	245/50R18	100	W		BLK	TL	○	708	256	7.50	7.00 - 8.50	7.8
		215/45R18	93	W	○	BLK	TL	○	654	215	7.00	7.00 - 8.00	7.6
	45	225/45R18	95	W	○	BLK	TL	○	662	227	7.50	7.00 - 8.50	8.0
235/45R18		94	W		BLK	TL	○	672	238	8.00	7.50 - 9.00	7.8	
245/45R18		100	W	○	BLK	TL	○	680	246	8.00	7.50 - 9.00	7.8	
40		225/40R18	92	W	○	BLK	TL	○	640	232	8.00	7.50 - 9.00	7.7
		235/40R18	95	W	○	BLK	TL	○	648	244	8.50	8.00 - 9.50	8.1
		245/40R18	93	W		BLK	TL	○	656	251	8.50	8.00 - 9.50	7.8

Continued next page.

SP SPORT FM800

COMFORT

High-Dispersion Silica enhances rubber flexibility and formulated Wet Performance Enhancer improves overall wet grip performance. The tire's rubber compound is optimized for lower friction and profile, which leads to less heat generation, and thus, an improved RRC. Moreover, wide straight grooves improve aquaplaning resistance.



SP SPORT FM800

Rim (inch)	Aspect ratio (%)	Tire Size	Load Index	Speed Symbol	XL or RF	Sidewall Style	TL or TT	E-No.	Overall Diam. (mm)	Section Width (mm)	Measuring Rim Width (inch)	Approved Rim Width (inch)	Tread Depth (mm)
18	40	225/40R18	92	W	○	BLK	TL	○	637	230	8.00	7.50 - 9.00	8.0
		245/40R18	97	W	○	BLK	TL	○	653	245	8.50	8.00 - 9.50	8.0
	45	235/45R18	98	W	○	BLK	TL	○	665	247	8.00	7.50 - 9.00	8.0
		245/45R18	100	W	○	BLK	TL	○	677	243	8.00	7.50 - 9.00	8.0
55	215/55R18	215/55R18	95	H		BLK	TL	○	693	225	7.00	6.00 - 7.50	7.9
		225/55R18	98	H		BLK	TL	○	705	233	7.00	6.00 - 8.00	8.0
	60	225/60R18	100	H		BLK	TL	○	727	228	6.50	6.00 - 8.00	8.0
		205/45R17	88	W	○	BLK	TL	○	616	206	7.00	6.50 - 7.50	7.8
17	45	215/45R17	91	W	○	BLK	TL	○	626	212	7.00	7.00 - 8.00	7.9
		225/45R17	94	W	○	BLK	TL	○	634	224	7.50	7.00 - 8.50	8.0
	50	235/45R17	94	W		BLK	TL	○	644	236	8.00	7.50 - 9.00	8.0
		245/45R17	95	W		BLK	TL	○	652	243	8.00	7.50 - 9.00	8.0
55	205/50R17	205/50R17	93	W	○	BLK	TL	○	638	212	6.50	5.50 - 7.50	7.8
		215/50R17	91	W		BLK	TL	○	648	224	7.00	6.00 - 7.50	7.9
	60	225/50R17	94	W		BLK	TL	○	658	232	7.00	6.00 - 8.00	8.0
		205/55R17	91	V		BLK	TL	○	658	213	6.50	5.50 - 7.50	7.8
16	65	215/55R17	94	W		BLK	TL	○	668	225	7.00	6.00 - 7.50	7.9
		225/55R17	101	W	○	BLK	TL	○	680	233	7.00	6.00 - 8.00	8.0
	45	225/65R17	102	V		BLK	TL	○	726	227	6.50	6.00 - 8.00	8.0
		195/45R16	84	V	○	BLK	TL	○	582	194	6.50	6.00 - 7.50	7.7
50	195/50R16	195/50R16	86	V		BLK	TL	○	600	212	7.00	7.00 - 8.00	7.9
		195/50R16	84	V		BLK	TL	○	602	201	6.00	5.50 - 7.00	7.7
	55	185/55R16	83	V		BLK	TL	○	610	194	6.00	5.00 - 6.50	7.6
		195/55R16	87	V		BLK	TL	○	620	201	6.00	5.50 - 7.00	7.7
60	205/55R16	205/55R16	91	V		BLK	TL	○	632	213	6.50	5.50 - 7.50	7.8
		215/55R16	93	V		BLK	TL	○	642	225	7.00	6.00 - 7.50	7.9
	65	215/55R16	97	W	○	BLK	TL	○	642	225	7.00	6.00 - 7.50	7.9
		225/55R16	95	V		BLK	TL	○	654	233	7.00	6.00 - 8.00	8.0
15	50	195/60R16	89	V		BLK	TL	○	640	201	6.00	5.50 - 7.00	7.9
		205/60R16	92	H		BLK	TL	○	652	208	6.00	5.50 - 7.50	8.0
	55	215/60R16	99	H	○	BLK	TL	○	664	221	6.50	6.00 - 7.50	8.0
		205/65R16	95	H		BLK	TL	○	674	209	6.00	5.50 - 7.50	8.0
60	175/65R16	215/65R16	98	H		BLK	TL	○	688	221	6.50	6.00 - 7.50	8.0
		175/50R15	75	H		BLK	TL	○	557	180	5.50	5.00 - 6.00	7.7
	55	195/50R15	82	V		BLK	TL	○	577	200	6.00	5.50 - 7.00	7.7
		185/55R15	86	V	○	BLK	TL	○	585	194	6.00	5.00 - 6.50	7.6
60	195/55R15	85	V		BLK	TL	○	595	201	6.00	5.50 - 7.00	7.7	
	205/55R15	88	V		BLK	TL	○	607	213	6.50	5.50 - 7.50	7.8	
60	175/60R15	81	H		BLK	TL	○	591	177	5.00	5.00 - 6.00	7.7	

Continued next page.

SP SPORT FM800

COMFORT

Rim (inch)	Aspect ratio (%)	Tire Size	Load Index	Speed Symbol	XL or RF	Sidewall Style	TL or TT	E-No.	Overall Diam. (mm)	Section Width (mm)	Measuring Rim Width (inch)	Approved Rim Width (inch)	Tread Depth (mm)
15	60	185/60R15	84	H		BLK	TL	○	603	189	5.50	5.00 - 6.50	7.8
		185/60R15	88	H	○	BLK	TL	○	603	189	5.50	5.00 - 6.50	7.8
		195/60R15	88	H		BLK	TL	○	615	201	6.00	5.50 - 7.00	7.9
	65	195/60R15	88	V		BLK	TL	○	615	201	6.00	5.50 - 7.00	7.9
		205/60R15	91	H		BLK	TL	○	627	209	6.00	5.50 - 7.50	8.0
		175/65R15	84	H		BLK	TL	○	611	178	5.00	5.00 - 6.00	7.7
14	55	185/65R15	88	H		BLK	TL	○	623	189	5.50	5.00 - 6.50	7.8
		195/65R15	91	H		BLK	TL	○	637	202	6.00	5.50 - 7.00	7.9
		195/65R15	91	V		BLK	TL	○	637	202	6.00	5.50 - 7.00	7.9
	60	205/65R15	94	H		BLK	TL	○	649	209	6.00	5.50 - 7.50	8.0
		185/55R14	80	H		BLK	TL	○	560	194	6.00	5.00 - 6.50	7.6
		185/60R14	82	H		BLK	TL	○	578	189	5.50	5.00 - 6.50	7.8
13	60	175/65R14	82	H		BLK	TL	○	586	178	5.00	5.00 - 6.00	7.7
		185/65R14	86	H		BLK	TL	○	598	189	5.50	5.00 - 6.50	7.8
13	60	185/60R13	80	H		BLK	TL	○	552	189	5.50	5.00 - 6.50	7.8



SP TOURING R1

STANDARD

- 4 Rib design and wider groove construction provides a higher stiffness and more sporty appearance than that of the 5-rib design. It is suitable for small and medium cars.
- Improvements in durability and reduced deformation is achieved through adopting this tread pattern and its Circular Cross Profile.



SP TOURING R1

Rim (inch)	Aspect ratio (%)	Tire Size	Load Index	Speed Symbol	XL or RF	Sidewall Style	TL or TT	E-No.	Overall Diam. (mm)	Section Width (mm)	Rim Width Measuring (inch)	Approved (inch)	Tread Depth (mm)	
16	50	195/50R16	84	H		BLK	TL	○	602	201	6.00	5.50 - 7.00	8.3	
	55	* 215/55R16	93	H		BLK	TL	○	642	226	7.00	6.00 - 7.50	8.5	
		185/55R16	83	H		BLK	TL	○	610	194	6.00	5.00 - 6.50	8.2	
		205/55R16	91	H		BLK	TL	○	632	214	6.50	5.50 - 7.50	8.4	
60	* 215/60R16	95	H		BLK	TL	○	664	221	6.50	6.00 - 7.50	8.5		
	185/60R16	86	T		BLK	TL	○	628	189	5.50	5.00 - 6.50	8.2		
	205/60R16	92	H		BLK	TL	○	652	209	6.00	5.50 - 7.50	8.4		
15	50	175/50R15	75	H		BLK	TL	○	557	182	5.50	5.00 - 6.00	8.1	
	55	185/55R15	82	H		BLK	TL	○	585	194	6.00	5.00 - 6.50	8.2	
		195/55R15	85	H		BLK	TL	○	595	201	6.00	5.50 - 7.00	8.3	
	60	175/60R15	81	S		BLK	TL	○	591	177	5.00	5.00 - 6.00	8.1	
		185/60R15	84	H		BLK	TL	○	603	189	5.50	5.00 - 6.50	8.2	
		195/60R15	88	H		BLK	TL	○	615	201	6.00	5.50 - 7.00	8.3	
		205/60R15	91	T		BLK	TL	○	627	209	6.00	5.50 - 7.50	8.4	
	65	175/65R15	84	H		BLK	TL	○	609	177	5.00	5.00 - 6.00	8.1	
		185/65R15	88	H		BLK	TL	○	621	189	5.50	5.00 - 6.50	8.2	
		195/65R15	91	H		BLK	TL	○	635	201	6.00	5.50 - 7.00	8.3	
205/65R15		94	H		BLK	TL	○	647	209	6.00	5.50 - 7.50	8.4		
215/65R15		96	H		BLK	TL	○	661	221	6.50	6.00 - 7.50	8.5		
70	205/70R15	96	H		BLK	TL	○	669	209	6.00	5.00 - 7.00	8.4		
	215/70R15	98	H		BLK	TL	○	683	221	6.50	5.50 - 7.00	8.5		
14	60	165/60R14	75	T		BLK	TL	○	554	170	5.00	4.50 6.00	7.6	
		185/60R14	82	H		BLK	TL	○	578	189	5.50	5.00 6.50	8.2	
		195/60R14	86	H		BLK	TL	○	590	201	6.00	5.50 7.00	8.3	
	65	165/65R14	79	T		BLK	TL	○	570	170	5.00	4.50 6.00	7.5	
175/65R14		82	H		BLK	TL	○	584	177	5.00	5.00 6.00	8.1		
185/65R14		86	H		BLK	TL	○	596	189	5.50	5.00 6.50	8.2		
70	195/65R14	89	T		BLK	TL	○	610	201	6.00	5.50 7.00	8.3		
	165/70R14	81	H		BLK	TL	○	588	170	5.00	4.00 5.50	7.6		
	185/70R14	88	H		BLK	TL	○	616	189	5.50	4.50 6.00	8.2		
	195/70R14	91	H		BLK	TL	○	630	201	6.00	5.00 6.50	8.3		
80	185/80R14	91	S		BLK	TL	○	652	184	5.00	4.50 6.00	8.2		
	13	65	165/65R13	77	T		BLK	TL	○	544	170	5.00	4.50 6.00	7.5
		70	165/70R13	79	T		BLK	TL	○	562	170	5.00	4.00 5.50	7.6
			175/70R13	82	T		BLK	TL	○	576	177	5.00	4.50 6.00	8.1
80		185/70R13	86	S		BLK	TL	○	590	189	5.50	4.50 6.00	8.2	
		165/80R13	83	S		BLK	TL	○	594	165	4.50	4.00 5.50	7.5	
	12	70	155/70R12	73	T		BLK	TL	○	523	157	4.50	4.00 5.00	7.5
		175/70R12	80	S		BLK	TL	○	551	177	5.00	4.50 6.00	8.1	

* 5 rib design

ENASAVE EC300+

ECO

- ENASAVE EC300+ is a tire engineered for a quiet, comfortable ride, be it in the city or open road.
- The low rolling resistance compound also means additional fuel savings for environmental friendliness.



ENASAVE EC300+

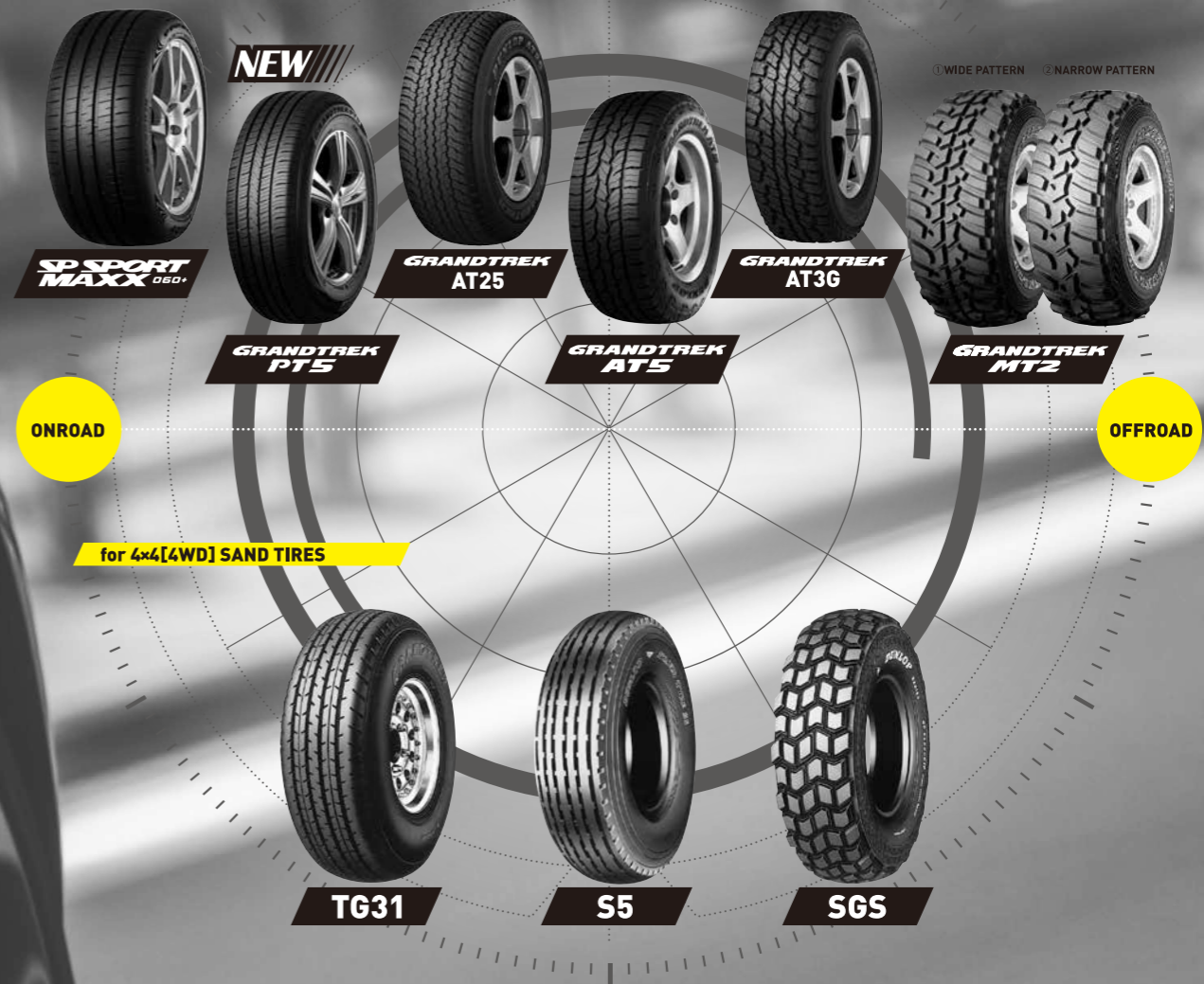
Rim (inch)	Aspect ratio (%)	Tire Size	Load Index	Speed Symbol	XL or RF	Sidewall Style	TL or TT	E-No.	Overall Diam. (mm)	Section Width (mm)	Rim Width Measuring (inch)	Approved (inch)	Tread Depth (mm)
17	50	225/50R17	94	V		BLK	TL	○	658	235	7.00	6.00 - 8.00	7.9
	55	215/55R17	94	V		BLK	TL	○	670	226	7.00	6.00 - 7.50	7.9
16	50	195/50R16	84	V		BLK	TL	○	620	203	6.00	5.50 - 7.00	7.8
	55	185/55R16	83	V		BLK	TL	○	611	195	6.00	5.00 - 6.50	7.7
		195/55R16	87	V		BLK	TL	○	621	201	6.00	5.50 - 7.00	7.8
60	205/60R16	92	H		BLK	TL	○	654	210	6.00	5.50 - 7.50	7.8	
	215/60R16	95	H		BLK	TL	○	666	223	6.50	6.00 - 7.50	7.9	
	65	215/65R16	98	H		BLK	TL	○	689	223	6.50	6.00 - 7.50	7.9
15	55	185/55R15	82	H		BLK	TL	○	586	195	6.00	5.00 - 6.50	7.7
	60	165/60R15	77	H		BLK	TL	○	579	165	5.00	4.50 - 6.00	6.8
		175/60R15	81	H		BLK	TL	○	592	177	5.00	5.00 - 6.00	7.7
65	175/65R15	84	H		BLK	TL	○	609	177	5.00	5.00 - 6.00	7.7	



4x4[4WD] & SUV TIRES

4x4[4WD] & SUV TIRES LINE-UP

4x4[4WD] & SUV TIRES



GRANDTREK AT3G

4x4 (4WD) & SUV TIRES

- GRANDTREK AT3G has very high stiff construction in the history of GRANDTREK.
- The tread pattern is designed to provide excellent grip and traction in on and off-road conditions while also preventing stone drilling in the tough conditions.



**GRANDTREK
AT3G**

Rim (inch)	Aspect ratio (%)	Tire Size	Ply Rating	Load Index	Speed Symbol	XL or RF	Sidewall Style	TL or TT	E-No.	Overall Diam. (mm)	Section Width (mm)	Measuring (inch)	Rim Width (inch)	Approved (inch)	Tread Depth (mm)
20	55	275/55R20		113	T		WLT	TL	○	810	288	8.50	7.50 - 9.50	10.0	
	60	265/60R18		114	S	○	BLK	TL	○	775	270	8.00	7.50 - 9.50	9.6	
18	60	285/60R18		116	S		BLK	TL	○	800	301	8.50	8.00 - 10.00	10.1	
		265/65R17		116	T	○	BLK	TL	○	775	278	8.00	7.50 - 9.50	9.6	
17	65	LT265/65R17		120/117	R		BLK	TL	○	776	270	8.00	7.50 - 9.50	12.0	
		LT275/65R17		121/118	R		BLK	TL	○	790	277	8.00	7.50 - 9.50	12.5	
		285/65R17		116	S		BLK	TL	○	802	290	8.50	8.00 - 10.00	10.1	
		LT245/70R17		119	S		WLT	TL	○	774	253	7.00	6.50 - 8.00	12.5	
16	70	LT265/70R17		121/118	R		BLK	TL	○	804	270	8.00	7.00 - 8.50	12.5	
		LT285/70R17		121/118	R		BLK	TL	○	838	290	8.50	7.50 - 9.00	13.4	
		245/70R16		111	S	○	BLK	TL	○	750	246	7.00	6.50 - 8.00	11.5	
16	70	LT255/70R16		120/117	S		WLT	TL	○	760	265	7.50	6.50 - 8.00	13.0	
		LT265/70R16		121/118	R		BLK	TL	○	778	270	8.00	7.00 - 8.50	12.5	
		LT245/75R16	10	120/116	Q		BLK	TL	○	774	246	7.00	6.50 - 8.00	11.5	
15	85	265/75R16		116	T		WLT	TL	○	800	273	7.50	7.00 - 9.00	10.5	
		LT265/75R16	10	123/120	Q		BLK	TL	○	804	265	7.50	7.00 - 8.00	12.5	
		LT235/85R16		120/116	R		BLK	TL	○	806	233	6.50	6.00 - 7.50	12.5	
15	85	30x9.50R15LT		104	S		BLK	TL	○	750	238	7.50	6.50 - 8.50	11.5	
		31x10.50R15LT		109	S		BLK	TL	○	775	266	8.50	7.00 - 9.00	12.5	

GRANDTREK MT1

4x4 (4WD) & SUV TIRES

- A mud battling 4x4 tire for both on and off road.
- Edges that grip the road surface and self-cleaning tread provide you with powerful traction in mud and gravel.



**GRANDTREK
MT1**

Rim (inch)	Aspect ratio (%)	Tire Size	Ply Rating	Load Index	Speed Symbol	XL or RF	Sidewall Style	TL or TT	E-No.	Overall Diam. (mm)	Section Width (mm)	Measuring (inch)	Rim Width (inch)	Approved (inch)	Tread Depth (mm)
15	60	30X9.50R15LT	6	104	N		WLT	TL	○	756	250	7.50	6.50 - 8.50	14.4	
		31X10.50R15LT	6	109	N		WLT	TL	○	782	273	8.50	7.00 - 9.00	14.4	
		32X11.50R15LT	6	113	N		WLT	TL	○	805	290	9.00	8.00 - 10.00	14.9	
		33X12.50R15LT	6	108	N		WLT	TL	○	829	324	10.00	8.50 - 11.00	14.9	

GRANDTREK MT2

4x4 (4WD) & SUV TIRES

- GRANDTREK MT2 is a real off-road tire for dirt, rock, and mud conditions.
- ① Wide tread has enhanced off-road performance (mud & dirt) and on-road performance (wet traction, noise & ride comfort).
- ② Narrow tread is high in mud running performance.



**GRANDTREK
MT2**

① WIDE PATTERN

Rim (inch)	Aspect ratio (%)	Tire Size	Ply Rating	Load Index	Speed Symbol	XL or RF	Sidewall Style	TL or TT	E-No.	Overall Diam. (mm)	Section Width (mm)	Measuring (inch)	Rim Width (inch)	Approved (inch)	Tread Depth (mm)
16	70	265/70R16		112	Q		BLK	TL	○	778	263	8.00	7.00 - 9.00	14.4	
		LT225/75R16		103/100	Q		OWL	TL	○	753	218	6.00	6.00 - 7.00	13.4	
	75	LT225/75R16		115/112	Q		BLK	TL	○	754	215	6.00	6.00 - 7.00	13.4	
		LT245/75R16		108/104	Q		OWL	TL	○	782	247	7.00	6.50 - 8.00	13.9	
		LT245/75R16		120/116	Q		BLK	TL	○	787	241	7.00	6.50 - 8.00	13.9	
		LT265/75R16	6	112/109	Q		OWL	TL	○	812	267	7.50	7.00 - 8.00	14.4	
		LT285/75R16	6	116/113	Q		OWL	TL	○	842	287	8.00	7.50 - 9.00	14.9	
		LT285/75R16		126/123	Q		BLK	TL	○	841	278	8.00	7.50 - 9.00	14.9	

② NARROW PATTERN

Rim (inch)	Aspect ratio (%)	Tire Size	Ply Rating	Load Index	Speed Symbol	XL or RF	Sidewall Style	TL or TT	E-No.	Overall Diam. (mm)	Section Width (mm)	Measuring (inch)	Rim Width (inch)	Approved (inch)	Tread Depth (mm)
16	85	LT235/85R16	6	108/104	Q		OWL	TL	○	816	244	6.50	6.00 - 7.50	13.9	
		LT255/85R16	6	112/109	Q		OWL	TL	○	845	262	7.00	6.50 - 8.00	14.5	



GRANDTREK AT20

4x4 (4WD) & SUV TIRES

- Developed for luxury SUVs, GRANDTREK AT20 demonstrates a smooth ride on the highway and provides some off-road use as well.
- By using Robust Case Construction, it offers extra protection against many hazards commonly encountered in off-road conditions.



**GRANDTREK
AT20**

Rim (inch)	Aspect ratio (%)	Tire Size	Ply Rating	Load Index	Speed Symbol	XL or RF	Sidewall Style	TL or TT	E-No.	Overall Diam. (mm)	Section Width (mm)	Measuring (inch)	Rim Width Approved (inch)	Tread Depth (mm)
18	60	(P) 225/60R18		99	H		BLK	TL	○	731	229	6.50	6.00 - 8.00	8.2
		265/60R18		110	H		BLK	TL	○	778	266	8.00	7.50 - 9.50	8.7
17	65	245/65R17		111	S	○	BLK	TL	○	752	243	7.00	7.00 - 8.50	9.0
		265/65R17		112	S		BLK	TL	○	777	268	8.00	7.50 - 9.50	8.7
		(P) 265/65R17		110	S		BLK	TL	○	775	265	8.00	7.50 - 9.50	8.7
		275/65R17		115	H		BLK	TL	○	793	277	8.00	7.50 - 9.50	9.2
70		225/70R17C	108/106		S		BLK	TL	○	758	227	6.00	6.00 - 7.50	9.2
		225/70R17	108		S	○	BLK	TL	○	761	223	6.50	6.00 - 7.50	9.2
		245/70R17	110		S		BLK	TL	○	778	251	7.00	6.50 - 8.00	9.0
		(P) 265/70R17	113		S		BLK	TL	○	801	270	8.00	7.00 - 9.00	8.7
16	70	245/70R16		111	S	○	BLK	TL	○	751	248	7.00	6.50 - 8.00	8.5
		255/70R16		111	H		BLK	TL	○	763	254	7.50	6.50 - 8.50	8.7
		255/70R16		111	T		BLK	TL	○	764	255	7.50	6.50 - 8.50	8.5
		LT255/70R16	108/104		S		BLK	TL	○	766	255	7.50	6.50 - 8.00	8.7
		265/70R16	112		S		BLK	TL	○	776	259	8.00	7.00 - 9.00	8.7
80	75	275/70R16		114	H		BLK	TL	○	794	276	8.00	7.00 - 9.00	9.2
		205/80R16	104		S	○	BLK	TL	○	734	212	6.00	5.00 - 7.00	9.4
		205R16C	8 110/108		R		BLK	TL	○	735	209	6.00	5.50 - 6.50	9.4

(P) : P-metric sizes designed to TRA standards.

GRANDTREK AT22

4x4 (4WD) & SUV TIRES

- Developed for Luxury SUVs, its sophisticated design provides excellent performance on the highway as well as having reasonable off-road capabilities.



**GRANDTREK
AT22**

Rim (inch)	Aspect ratio (%)	Tire Size	Ply Rating	Load Index	Speed Symbol	XL or RF	Sidewall Style	TL or TT	E-No.	Overall Diam. (mm)	Section Width (mm)	Measuring (inch)	Rim Width Approved (inch)	Tread Depth (mm)
18	60	265/60R18		110	H		BLK	TL	○	780	266	8.00	7.50 - 9.50	9.5
		285/60R18		116	V		BLK	TL	○	802	288	8.50	8.00 - 10.00	9.7
17	65	265/65R17		112	T		BLK	TL	○	777	272	8.00	7.50 - 9.50	9.5
		275/65R17		115	T		OWL	TL	○	792	282	8.00	7.50 - 9.50	10.2
		285/65R17		116	H		BLK	TL	○	802	287	8.50	8.00 - 10.00	10.2
		265/70R17		115	S		BLK	TL	○	800	269	7.50	7.00 - 9.00	9.9
16	75	265/75R16		116	S		BLK	TL	○	800	262	7.50	7.00 - 9.00	10.2
15	75	235/75R15		109	S	○	BLK	TL	○	733	238	6.50	6.00 - 8.00	11.5



GRANDTREK AT23

4x4 [4WD] & SUV TIRES

Tires for the users who appreciate the performance on the highway, offers a quiet and smooth ride as well as high speed stability and durability.



GRANDTREK AT23

Rim (inch)	Aspect ratio (%)	Tire Size	Ply Rating	Load Index	Speed Symbol	XL or RF	Sidewall Style	TL or TT	E-No.	Overall Diam. (mm)	Section Width (mm)	Rim Width Measuring (inch)	Rim Width Approved (inch)	Tread Depth (mm)
20	60	275/60R20		115	H		BLK	TL	○	839	278	8.00	7.50 - 9.50	9.1
19	55	265/55R19		109	V		BLK	TL		778	270	8.50	7.50 - 9.50	7.5
18	60	275/60R18		112	H		BLK	TL		790	277	8.00	7.50 - 9.50	9.2
		275/60R18		113	H		BLK	TL	○	790	277	8.00	7.50 - 9.50	9.2
		[P] 275/60R18		111	H		BLK	TL		789	278	8.00	7.50 - 9.50	9.2
		285/60R18		116	V		BLK	TL	○	803	282	8.00	8.00 - 10.00	9.2
		[P] 285/60R18		114	V		BLK	TL		803	282	8.00	8.00 - 10.00	9.2
	70	265/70R18		116	H		BLK	TL		828	277	8.00	7.00 - 9.00	9.0
17	65	275/65R17		115	H		BLK	TL	○	793	277	8.00	7.50 - 9.50	9.2
16	70	275/70R16		114	H		OWL	TL	○	794	276	8.00	7.00 - 9.00	9.2

[P] : P-metric sizes designed to TRA standards.

GRANDTREK AT25

4x4 [4WD] & SUV TIRES

The tire is specified as original equipment (OE) fitment to selected models of the popular SUV/Pick up truck.
 Good traction in off-road mud conditions but a quiet driving experience on road are key features that set GRANDTREK AT25 apart from similar offerings in the market.



GRANDTREK AT25

Rim (inch)	Aspect ratio (%)	Tire Size	Ply Rating	Load Index	Speed Symbol	XL or RF	Sidewall Style	TL or TT	E-No.	Overall Diam. (mm)	Section Width (mm)	Rim Width Measuring (inch)	Rim Width Approved (inch)	Tread Depth (mm)
18	60	255/60R18		108	H		BLK	TL	○	766	257	7.00	7.00 - 9.00	8.7
		265/60R18		110	H		BLK	TL	○	779	267	8.00	7.50 - 9.50	8.7
		285/60R18		116	V		BLK	TL	○	801	288	8.50	8.00 - 10.00	9.7
17	65	255/65R17		110	S		BLK	TL	○	765	253	7.50	7.00 - 9.00	8.4
		265/65R17		112	S		BLK	TL	○	774	273	8.00	7.50 - 9.50	8.7

GRANDTREK AT30

4x4 [4WD] & SUV TIRES

"GRANDTREK AT30" tires offer superior fuel economy performance and off-road performance, thanks to its new tread pattern design, tread compound and improved inner construction.



GRANDTREK AT30

Rim (inch)	Aspect ratio (%)	Tire Size	Ply Rating	Load Index	Speed Symbol	XL or RF	Sidewall Style	TL or TT	E-No.	Overall Diam. (mm)	Section Width (mm)	Rim Width Measuring (inch)	Rim Width Approved (inch)	Tread Depth (mm)
19	55	265/55R19		109	V		BLK	TL	○	780	269	8.50	7.50 - 9.50	8.9
18	65	265/65R18		114	V		BLK	TL	○	808	277	8.00	7.50 - 9.50	8.1
17	75	245/75R17		112	H		BLK	TL	○	800	250	7.00	6.50 - 8.00	10.6

GRANDTREK AT30 TOURING

4x4 [4WD] & SUV TIRES

"GRANDTREK AT30 TOURING" are tuned from AT30 for the better on-road performance with the benefit of AT30. It doesn't compromise on-road performance and offers a comfortable ride on the highways.



GRANDTREK AT30 TOURING

Rim (inch)	Aspect ratio (%)	Tire Size	Ply Rating	Load Index	Speed Symbol	XL or RF	Sidewall Style	TL or TT	E-No.	Overall Diam. (mm)	Section Width (mm)	Rim Width Measuring (inch)	Rim Width Approved (inch)	Tread Depth (mm)
20	55	265/55R20		113	V		BLK	TL	○	807	272	8.50	7.50 - 9.50	7.2

LIGHT TRUCK TIRES



ENASAVE SPLT50

LIGHT TRUCK TIRES

- ENASAVE SPLT50 is a fuel-efficient tire for small trucks and buses that has both excellent environmental performance and economic efficiency at the same time by enhancing the life performance required by users and having excellent fuel efficiency performance.
- LIFE performance has been significantly improved by adopting a new compound that uses new active carbon and abrasion resistant polymer, and a special pattern that increases the tread width and land ratio.



Rim (inch)	Aspect ratio (%)	Tire Size	Ply Rating	Load Index	Speed Symbol	XL or RF	Sidewall Style	TL or TT	E-No.	Overall Diam. (mm)	Section Width (mm)	Measuring (inch)	Rim Width Approved (inch)	Tread Depth (mm)
17.5	60	205/60R17.5		111/109	L		BLK	TL	○	689	200	6.00	5.25 - 6.75	10.0
	70	205/70R17.5		115/113	L		BLK	TL	○	734	208	6.00	5.25 - 6.75	10.5
		215/70R17.5		118/116	L		BLK	TL	○	746	214	6.00	6.00 - 6.75	11.0
16	80	205/80R17.5		120/118	L		BLK	TL	○	773	208	6.00	5.25 - 6.00	11.5
	65	*205/65R16		109/107	N		BLK	TL	○	671	214	6.00	5.50 - 6.50	10.0
	85	*185/85R16		111/109	N		BLK	TL	○	718	187	5.00	4.50 - 6.00	10.5
		*195/85R16		114/112	N		BLK	TL	○	737	202	5.50	5.00 - 6.00	10.5
		*205/85R16		117/115	N		BLK	TL	○	757	210	5.50	5.00 - 6.50	10.5
215/85R16			120/118	N		BLK	TL	○	771	216	6.00	5.50 - 7.00	11.0	

* ENASAVE SPLT50M

SP VAN01

LIGHT TRUCK TIRES

- Our generation of summer tires designed specially for vans. SP VAN01 offers outstanding durability and safety combined with excellent mileage.



SP VAN01

Rim (inch)	Aspect ratio (%)	Tire Size	Ply Rating	Load Index	Speed Symbol	XL or RF	Sidewall Style	TL or TT	E-No.	Overall Diam. (mm)	Section Width (mm)	Measuring (inch)	Rim Width Approved (inch)	Tread Depth (mm)
16	60	195/60R16C		99/97	H		BLK	TL	○	640	199	6.00	5.50 - 6.50	8.2
	65	195/65R16C		104/102	T		BLK	TL	○	658	199	6.00	5.50 - 6.00	8.2
		205/65R16C		107/105	T		BLK	TL	○	671	207	6.00	5.50 - 6.50	8.6
		215/65R16C		109/107	T		BLK	TL	○	685	219	6.50	6.00 - 7.00	8.6
		225/65R16C		112/110	R		BLK	TL	○	697	226	6.50	6.00 - 7.00	9.1
		235/65R16C		115/113	R		BLK	TL	○	711	239	7.00	6.50 - 7.50	9.1
	75	185/75R16C		104/102	R		BLK	TL	○	684	182	5.00	5.00 - 6.00	8.2
		195/75R16C		107/105	R		BLK	TL	○	698	194	5.50	5.00 - 6.00	8.6
		205/75R16C		113/111	R		BLK	TL	○	714	201	5.50	5.50 - 6.50	9.1
		215/75R16C		116/114	R		BLK	TL	○	728	214	6.00	5.50 - 7.00	9.6
225/75R16C			118/116	R		BLK	TL	○	744	221	6.00	6.00 - 7.00	9.6	
15	70	195/70R15C		104/102	R		BLK	TL	○	655	199	6.00	5.00 - 6.00	8.2
		205/70R15C		106/104	R		BLK	TL	○	669	207	6.00	5.50 - 6.50	8.2
		225/70R15C		112/110	R		BLK	TL	○	697	226	6.50	6.00 - 7.00	9.1
14	195R15C		106/104	R		BLL	TL	○	690	196	5.50	5.00 - 6.00	8.2	
	185R14C		102/100	R		BLK	TL	○	650	186	5.50	5.00 - 6.00	8.2	
13	195R14C		106/104	R		BLK	TL	○	666	196	5.50	5.00 - 6.00	8.2	
	155R13C		90/89	P		BLK	TL	○	550	155	4.50	4.00 - 5.00	8.2	
12	165R13C		94/92	R		BLK	TL	○	595	170	4.50	4.00 - 5.00	8.1	
	155R12C		88/86	P		BLK	TL	○	578	155	4.50	4.00 - 5.00	8.2	

SP175

LIGHT TRUCK TIRES

- Premium casing construction helps SP175 to stay robust and lends it improved endurance across tough terrains.
- The versatile tread design of this tire, which features reinforced shoulders with outer edge notches, ensures improved handling and resistance to shoulder wear.
- The complex groove and sip network of the tread pattern helps SP175 to evade the hazards of wet or slick roads and retain incredible grip.



SP 175

Rim (inch)	Aspect ratio (%)	Tire Size	Ply Rating	Load Index	Speed Symbol	XL or RF	Sidewall Style	TL or TT	E-No.	Overall Diam. (mm)	Section Width (mm)	Measuring (inch)	Rim Width Approved (inch)	Tread Depth (mm)
15	70	** 195/70R15C	8	104/102	R		BLK	TL		654	200	6.00	5.00 - 6.00	9.6
		*** 205/70R15C	8	106/104	R		BLK	TL		668	210	6.00	5.50 - 6.50	10.1
		*** 215/70R15C		109/107	R		BLK	TL		681	221	6.50	5.50 - 7.00	10.6
14		195R15	8				BLK	TL		689	194	5.50	5.00 - 6.00	9.1
		* 195R15C	8	106/104	R		BLK	TL	○	690	190	5.50	5.00 - 6.00	9.0
		165R14C	6	93/91	R		BLK	TL	○	623	167	4.50	4.00 - 5.00	8.0
		175R14	8				BLK	TL		638	174	5.00	4.50 - 5.50	8.2
		185R14C	6	99/97	R		BLK	TL		651	187	5.50	5.00 - 6.00	8.6
		185R14C	8	102/100	R		BLK	TL	○	652	189	5.50	5.00 - 6.00	8.6
		195R14C	6	102/100	R		BLK	TL	○	669	197	5.50	5.00 - 6.00	9.2
13		** 195R14C	8	106/104	R		BLK	TL	○	671	196	5.50	5.00 - 6.00	9.0
		155R13	8				BLK	TL		581	156	4.50	4.00 - 5.00	7.2
		165R13	8				BLK	TL		599	167	4.50	4.00 - 5.00	7.9
12		165R13C	8	94/92	N		BLK	TL	○	598	167	4.50	4.00 - 5.00	7.9
		175R13	8				BLK	TL		611	176	5.00	4.50 - 5.50	8.2
		155R12	8				BLK	TL		555	153	4.50	4.00 - 5.00	7.3
		155R12C	8	88/86	R		BLK	TL		555	155	4.50	4.00 - 5.00	7.3

* SP175M ** SP175A *** SP175S

SP LT30

LIGHT TRUCK TIRES

- Traditional light truck radial tire for vans and small pick-ups. Offers long life and riding comfort.



SP LT30

Rim (inch)	Aspect ratio (%)	Tire Size	Ply Rating	Load Index	Speed Symbol	XL or RF	Sidewall Style	TL or TT	E-No.	Overall Diam. (mm)	Section Width (mm)	Measuring (inch)	Rim Width Approved (inch)	Tread Depth (mm)
16	70	* 215/70R16C		108/106	S		BLK	TL	○	709	222	7.00	5.50 - 7.00	9.3
15	70	195/70R15C	8	104/102	S		BLK	TL	○	654	192	6.00	5.00 - 6.00	9.2
14	70	* 175/70R14C		95/93	T		BLK	TL	○	603	178	5.00	4.50 - 5.50	8.2
		* 165R14C	8	97/95	S		BLK	TL	○	622	167	4.50	4.00 - 5.00	8.7
		185R14C	8	102/100	R		BLK	TL	○	652	189	5.50	5.00 - 6.00	8.6
		195R14C	8	106/104	R		BLK	TL	○	671	196	5.50	5.00 - 6.00	9.0

* SPLIT30A

SP LT33

LIGHT TRUCK TIRES

- For light trucks and mini buses. Wide shoulder rib provides smooth running at high speed and casing durability.



SP LT33

Rim (inch)	Aspect ratio (%)	Tire Size	Ply Rating	Load Index	Speed Symbol	XL or RF	Sidewall Style	TL or TT	E-No.	Overall Diam. (mm)	Section Width (mm)	Measuring (inch)	Rim Width Approved (inch)	Tread Depth (mm)
17.5	60	205/60R17.5		111/109	L		BLK	TL	○	690	201	6.00	5.25 - 6.75	9.6
	70	215/70R17.5		118/116	L		BLK	TL		747	214	6.00	6.00 - 6.75	10.6
16	85	* 195/75R16C		107/105	N		BLK	TL		696	192	5.50	5.00 - 6.00	10.0
		195/85R16		114/112	L		BLK	TL	○	737	189	5.50	5.00 - 6.00	10.6
		205/85R16		117/115	L		BLK	TL	○	755	194	6.00	5.00 - 6.50	10.6
		215/85R16	12	120/118	L		BLK	TL	○	772	211	6.00	5.50 - 7.00	11.0
		7.00R16		117/116	N		BLK	TL	○	781	195	5.50	4.50 - 6.00	10.6
15.5	70	7.50R16	10	119/117	N		BLK	TT	○	810	212	6.00	5.50 - 7.00	11.0
		7.50R16	12	121/120	N		BLK	TT	○	809	214	6.00	6.00 - 7.00	11.0
		195/70R15.5	12	109/107	L		BLK	TL	○	662	192	6.00	6.00 - 6.00	10.1

* SPLIT33K

SP 185

LIGHT TRUCK TIRES

- Steel-belted radial tires developed mainly for longer tread life, riding comfort, and excellent performance in steering.



SP 185

Rim (inch)	Aspect ratio (%)	Tire Size	Ply Rating	Load Index	Speed Symbol	XL or RF	Sidewall Style	TL or TT	E-No.	Overall Diam. (mm)	Section Width (mm)	Measuring (inch)	Rim Width Approved (inch)	Tread Depth (mm)
16		6.50R16	10	109/107	M		BLK	TT	○	751	194	5.50	4.50 - 5.50	10.1
		7.00R16		113/111	N		BLK	TT	○	774	194	5.50	5.50 - 6.00	10.6
15		7.00R15	10	111/109	M		BLK	TT	○	750	198	5.50	5.50 - 6.00	10.6

SP 160

LIGHT TRUCK TIRES

- A radial-ply tire designed for highway use on small commercial vehicles and buses.



SP 160

Rim (inch)	Aspect ratio (%)	Tire Size	Ply Rating	Load Index	Speed Symbol	XL or RF	Sidewall Style	TL or TT	E-No.	Overall Diam. (mm)	Section Width (mm)	Measuring (inch)	Rim Width Approved (inch)	Tread Depth (mm)
16		7.50R16	14	122/120	L		BLK	TT	○	803	215	6.00	5.50 - 6.00	11.5
		7.50R16	14	123/121	L		BLK	TT	○	804	215	6.00	5.50 - 6.00	11.3
		8.25R16		128/126	L		BLK	TT	○	850	223	6.50	6.00 - 6.50	11.8

TRUCK & BUS TIRES

TBR Portfolio

	ON ROAD	ON-OFF ROAD	OFF ROAD
Steer	 SP320 SP350A SP391 SP122	nothing	nothing
Drive	 SP820 SP835 SP871 SP882 SP442 SP431A	nothing	 SP925 SP931 SP225
Trailer	 SP261 SP241 SP163	 SP231A SP281	nothing
All-position	 SP176※ SP120 SP150 SP160 SP341 SP171 SP521 SP502	 SP322 SP571 SP580A SP581 SP831 STE SP811	nothing

(SP176 ※): Designed for city bus use only.

SP 320SS

NEW



ON ROAD / Steer

The tread pattern and tyre foot print has a feature, which improves stability when steering and provides excellent grip in both wet and dry conditions, and reduces irregular wear and enhanced mileage.

SP320SS

Rim (inch)	Aspect ratio (%)	Tire Size	Ply Rating	Load Index	Speed Symbol	TL or TT	E-No.	Overall Diam. (mm)	Section Width (mm)	Measuring (inch)	Rim Width Approved (inch)	Tread Depth (mm)
22.5	80	295/80R22.5	18	154/149	M	TL	○	1047	307	9.00	8.25 - 9.00	13.2

SP 320

ON ROAD / Steer · All-position

A 5-rib tire for long distance use providing long mileage, and resistance to irregular wear.



SP320

Rim (inch)	Aspect ratio (%)	Tire Size	Ply Rating	Load Index	Speed Symbol	TL or TT	E-No.	Overall Diam. (mm)	Section Width (mm)	Measuring (inch)	Rim Width Approved (inch)	Tread Depth (mm)
22.5	55	385/55R22.5		160(158)	K(L)	TL	○	1005	384	12.25	11.75 - 12.25	14.5
	65	385/65R22.5	20	160(158)	K(L)	TL	○	1080	376	11.75	11.75 - 12.25	15.4
80		275/80R22.5	16	149/146	L	TL	○	1022	284	8.25	7.50 - 9.00	16.2
		295/80R22.5	18	154/149	M	TL	○	1053	303	9.00	8.25 - 9.00	16.5
		* 295/80R22.5	18	154/149	M	TL	○	1050	305	9.00	8.25 - 9.00	15.0
		* 315/80R22.5	20	156/150(154/150)	L(M)	TL	○	1074	314	9.00	9.00 - 9.75	15.0
		11R22.5	16	148/145	M	TL	○	1052	284	8.25	7.50 - 8.25	15.5
20		* 12R22.5	18	152/149	M	TL	○	1081	308	9.00	8.25 - 9.00	15.1
		10.00R20	16	147/143	L	TT	○	1053	278	7.50	7.00 - 7.50VM	15.5
17.5		8.5R17.5		121/120	L	TL	○	802	212	6.00	5.25 - 6.75	11.5
		205/75R17.5		124/122	M	TL	○	760	207	6.00	5.25 - 6.75	11.5
		215/75R17.5		126/124	M	TL	○	772	213	6.00	6.00 - 6.50	13.0
		235/75R17.5	16	132/130	M	TL	○	801	237	6.75	6.75 - 7.50	13.4

* SP320S

SP 350A

ON ROAD / Steer · All-position

The dynamic footprint delivers maximum contact and handling in line haul operating conditions. A premium 5-ribbed steer pattern capable of preventing uneven wear.



Rim (inch)	Aspect ratio (%)	Tire Size	Ply Rating	Load Index	Speed Symbol	TL or TT	E-No.	Overall Diam. (mm)	Section Width (mm)	Measuring (inch)	Rim Width Approved (inch)	Tread Depth (mm)
22.5	80	295/80R22.5	16	152/148	M	TL	○	1049	307	9.00	8.25 - 9.00	15.3
		315/80R22.5	18	154/150	M	TL	○	1078	315	9.00	9.00 - 9.75	16.5
		11R22.5	16	148/145	L	TL	○	1054	281	8.25	7.50 - 8.25	15.1
		12R22.5	16	152/148	L	TL	○	1082	300	9.00	8.25 - 9.00	15.1
22		11.00R22	16	150/146	K	TT	○	1136	298	8.00	7.50 - 8.50	14.9
		10.00R20	16	146/143	L	TT	○	1054	280	7.50	7.00 - 8.00	15.1
20		11.00R20	16	150/147	L	TT	○	1082	294	8.00	7.50 - 8.50	15.1

SP 391

ON ROAD / Steer · All-position

- High performance rib-pattern tire for regional use.
- It reduces irregular wear for long tread life.



SP 391

Rim (inch)	Aspect ratio (%)	Tire Size	Ply Rating	Load Index	Speed Symbol	TL or TT	E-No.	Overall Diam. (mm)	Section Width (mm)	Measuring (inch)	Rim Width Approved (inch)	Tread Depth (mm)
22.5	70	315/70R22.5		154/150	L	TL	○	1017	318	9.50	8.00 - 10.50	16.0
		275/80R22.5	16	149/146	L	TL	○	1023	281	8.25	7.50 - 8.25	16.2
	80	295/80R22.5	16	152/148	M	TL	○	1055	307	9.00	8.25 - 9.00	16.5
		315/80R22.5	18	154/150	M	TL	○	1078	312	9.00	9.00 - 9.75	17.0
		11R22.5	16	148/145	L	TL	○	1056	278	8.25	7.50 - 8.25	15.0
		12R22.5		152/148	L	TL	○	1083	301	9.00	8.25 - 9.00	15.7
17.5	75	215/75R17.5		126/124	M	TL	○	771	214	6.00	6.00 - 6.75	13.0

SP 122

ON ROAD / Steer · All-position

- SP 122 tire has been developed for application in all positions, but optimized on-road performance.



SP 122

Rim (inch)	Aspect ratio (%)	Tire Size	Ply Rating	Load Index	Speed Symbol	TL or TT	E-No.	Overall Diam. (mm)	Section Width (mm)	Measuring (inch)	Rim Width Approved (inch)	Tread Depth (mm)
22.5	70	275/70R22.5	16	148/145	J	TL	○	960	276	8.25	7.50 - 9.00	13.9
		275/80R22.5	16	149/146	L	TL	○	1016	284	8.25	7.50 - 9.00	14.0
	80	295/80R22.5	16	152/148	M	TL	○	1049	306	9.00	8.25 - 9.00	14.5
		11R22.5		148/145	L	TL	○	1048	283	8.25	7.50 - 8.25	14.4
19.5	70	245/70R19.5	14	136/134	J	TL	○	838	249	7.50	6.75 - 7.50	13.4
		265/70R19.5		140/138	M	TL	○	866	257	7.50	7.50 - 8.25RW	13.9
17.5	90	225/90R17.5	14	127/125	L	TL	○	855	233	6.75	6.00 - 6.75	13.0
		8.25R16	16	128/124	L	TT	○	856	231	6.50	6.00 - 7.00	12.0
16		7.50R16		122/118	L	TT	○	806	217	6.00	5.50 - 6.50	12.5

SP 820

ON ROAD / Drive

- SP820 is our latest-generation drive axle tire, delivering excellent traction in all year round.
- The new robust casing, wider and square footprint with 3D sipes installed in tread blocks, will ensure increased mileage performance and safety, for your regional and intercity transport needs.



SP 820

Rim (inch)	Aspect ratio (%)	Tire Size	Load Index	Speed Symbol	TL or TT	E-No.	Overall Diam. (mm)	Section Width (mm)	Measuring (inch)	Rim Width Approved (inch)	Tread Depth (mm)
22.5	80	* 315/80R22.5	156/150(154/150)	L(M)	TL	○	1080	313	9.00	9.00 - 9.75	16.6

* SP820S

SP 835

ON ROAD / Drive

- SP835 has been specifically designed for drive axle position for regional and highway use.
- With new bigger block tread pattern design, more open lug groove shape, shoulder block tie-bar, dual-layer tread compound construction and a reinforced bead, it provides long wear life, minimal irregular wear and stone trapping.



SP 835

Rim (inch)	Aspect ratio (%)	Tire Size	Ply Rating	Load Index	Speed Symbol	TL or TT	E-No.	Overall Diam. (mm)	Section Width (mm)	Measuring (inch)	Rim Width Approved (inch)	Tread Depth (mm)
22.5	70	315/70R22.5		154/150(152/148)	L(M)	TL	○	1032	313	9.00	9.00 - 9.75	22.0
		275/80R22.5	16	149/146	L	TL	○	1030	285	8.25	7.50 - 8.25	21.4
	80	295/80R22.5	16	152/148	M	TL	○	1066	306	9.00	8.25 - 9.00	21.4
		315/80R22.5		156/150(154/150)	L(M)	TL	○	1093	315	9.00	9.00 - 9.75	23.0
		11R22.5	16	148/145	L	TL	○	1067	281	8.25	7.50 - 8.25	22.2
		12R22.5	16	152/148	M	TL	○	1096	306	9.00	8.25 - 9.00	22.5
19.5	70	265/70R19.5	16	140/138	M	TL	○	875	255	7.50	6.75 - 7.50	15.9
17.5	75	215/75R17.5	14	126/124	M	TL	○	775	216	6.00	6.00 - 6.75	14.6
		235/75R17.5	16	132/130	M	TL	○	803	239	6.75	6.75 - 7.50	15.3

SP 871

ON ROAD / Drive

- A combination of wide and deep tread depth and advanced tread compound delivers longer mileage.
- Durable casing and integrity for retreadability is achieved through reduced heat build up.



SP 871

Rim (inch)	Aspect ratio (%)	Tire Size	Ply Rating	Load Index	Speed Symbol	TL or TT	E-No.	Overall Diam. (mm)	Section Width (mm)	Measuring (inch)	Rim Width Approved (inch)	Tread Depth (mm)
22.5	80	295/80R22.5	16	152/148	M	TL	○	1068	306	9.00	8.25 - 9.00	23.4
		11R22.5	16	148/145	L	TL	○	1067	281	8.25	7.50 - 8.25	22.5

SP 882

ON ROAD / Drive

- A drive position tire designed for on road operations.



SP 882

Rim (inch)	Aspect ratio (%)	Tire Size	Ply Rating	Load Index	Speed Symbol	TL or TT	E-No.	Overall Diam. (mm)	Section Width (mm)	Measuring (inch)	Rim Width Approved (inch)	Tread Depth (mm)
22.5	80	295/80R22.5		152/148	M	TL	○	1059	306	9.00	8.25 - 9.00	18.7
		315/80R22.5		154/150	M	TL	○	1091	309	9.00	9.00 - 9.75	21.3

SP 261

ON ROAD / Trailer

- A wide-base tire for highway use.
- 5-rib pattern for mainly trailer position use.



SP 261

Rim (inch)	Aspect ratio (%)	Tire Size	Ply Rating	Load Index	Speed Symbol	TL or TT	E-No.	Overall Diam. (mm)	Section Width (mm)	Measuring (inch)	Rim Width Approved (inch)	Tread Depth (mm)
22.5	55	385/55R22.5		160	K	TL	○	1006	384	8.25	7.50 - 9.00	16.0
	65	385/65R22.5		160(158)	K(L)	TL	○	1074	378	11.75	11.75 - 12.25	16.5

SP 442

ON ROAD / Drive

- A premium drive-axle tire.
- Provides long mileage, excellent traction on highway or wet surfaces.



SP 442

Rim (inch)	Aspect ratio (%)	Tire Size	Ply Rating	Load Index	Speed Symbol	TL or TT	E-No.	Overall Diam. (mm)	Section Width (mm)	Measuring (inch)	Rim Width Approved (inch)	Tread Depth (mm)
22.5	80	315/80R22.5	18	154/150	M	TL	○	1092	313	9.00	9.00 - 9.75	23.4
17.5	75	215/75R17.5		126/124	M	TL	○	777	212	6.00	6.00 - 6.75	14.7
		235/75R17.5		132/130	M	TL	○	806	238	6.75	6.75 - 7.50	16.5
		9.5R17.5		129/127	M	TL	○	847	240	6.75	6.00 - 6.75	16.4

SP 241

ON ROAD / Trailer

- A wide-base tire for trailer position use.



Rim (inch)	Aspect ratio (%)	Tire Size	Ply Rating	Load Index	Speed Symbol	TL or TT	E-No.	Overall Diam. (mm)	Section Width (mm)	Measuring (inch)	Rim Width Approved (inch)	Tread Depth (mm)
19.5	55	425/55R19.5		160	J	TL	○	979	418	13.00	13.00 - 14.00	13.0

SP 431A

ON ROAD / Drive

- An extra-deep traction tire for long tread life without sacrificing retreadability.
- The unique block pattern offers excellent traction and prevents block-punching under various conditions.



SP 431

Rim (inch)	Aspect ratio (%)	Tire Size	Ply Rating	Load Index	Speed Symbol	TL or TT	E-No.	Overall Diam. (mm)	Section Width (mm)	Measuring (inch)	Rim Width Approved (inch)	Tread Depth (mm)
24.5		11R24.5	16	149/146	L	TL	○	1118	279	8.25	7.50 - 8.25	20.2
22.5	80	295/80R22.5	16	152/148	M	TL	○	1060	308	9.00	8.25 - 9.00	20.2
		315/80R22.5	18	154/150	M	TL	○	1084	311	9.00	9.00 - 9.75	20.2
		11R22.5	16	148/145	L	TL	○	1065	283	8.25	7.50 - 8.25	20.2
		12R22.5	16	152/148	L	TL	○	1098	304	9.00	8.25 - 9.00	20.2
20		10.00R20	16	146/143	L	TT	○	1062	281	7.50	7.00 - 8.00	20.2



SP 176

ON ROAD / City BUS

- An all position tire designed for city busses.
- 4-rib pattern enhances durability and contact area.
- The tread pattern enhances wet performance and irregular wear resistance.



SP176

Rim (inch)	Aspect ratio (%)	Tire Size	Ply Rating	Load Index	Speed Symbol	TL or TT	E-No.	Overall Diam. (mm)	Section Width (mm)	Measuring (inch)	Rim Width Approved (inch)	Tread Depth (mm)
22.5	80	295/80R22.5	16	152/148	J	TL	○	1057	306	9.00	8.25 - 9.00	18.0
		275/80R22.5	16	149/146	J	TL	○	1028	281	8.25	7.50 - 9.00	17.9
		11R22.5	16	148/145	J	TL	○	1065	281	8.25	7.50 - 8.25	20.7

SP 120

ON ROAD / All-position

- This tire is a lightweight, high-mileage tubeless radial, offering superior high-speed capabilities and wet braking performance.



SP 120

Rim (inch)	Aspect ratio (%)	Tire Size	Ply Rating	Load Index	Speed Symbol	TL or TT	E-No.	Overall Diam. (mm)	Section Width (mm)	Measuring (inch)	Rim Width Approved (inch)	Tread Depth (mm)
22.5	60	265/60R22.5		143/140	J	TL	○	888	269	8.25	7.50 - 8.25	10.6
	80	295/80R22.5		152/148	M	TL	○	1045	302	9.00	8.25 - 9.00	13.4
19.5	70	265/70R19.5	18	143/141	J	TL	○	868	253	7.50	6.75 - 8.25	13.0

SP 150

ON ROAD / All-position

- A general purpose-highway tire providing excellent wear resistance and steering stability.



SP 150

Rim (inch)	Aspect ratio (%)	Tire Size	Ply Rating	Load Index	Speed Symbol	TL or TT	E-No.	Overall Diam. (mm)	Section Width (mm)	Measuring (inch)	Rim Width Approved (inch)	Tread Depth (mm)
17.5		10R17.5	16	134/132	L	TL	○	858	251	7.50	6.75 - 7.50	12.9

SP 160

ON ROAD / All-position

- A 5-rib All Position tire suitable for highway service with excellent casing durability.



SP 160

Rim (inch)	Aspect ratio (%)	Tire Size	Ply Rating	Load Index	Speed Symbol	TL or TT	E-No.	Overall Diam. (mm)	Section Width (mm)	Measuring (inch)	Rim Width Approved (inch)	Tread Depth (mm)
22.5	70	255/70R22.5		140/137	M	TL	○	925	254	7.50	6.75 - 8.25	12.5
		275/70R22.5	16	148/145	L	TL	○	959	274	8.25	7.50 - 8.25	13.4
80		275/80R22.5	16	148/145	M	TL	○	1017	275	8.25	7.50 - 8.25	13.4
		9R22.5	14	136/134	L	TL	○	967	225	6.75	6.00 - 6.75	12.5
		10R22.5	14	144/142	L	TL	○	1015	247	7.50	6.75 - 7.50	13.0
		11R22.5	16	148/145	L	TL	○	1049	275	8.25	7.50 - 8.25	13.4
		12R22.5	16	152/147	L	TL	○	1075	298	9.00	8.25 - 9.00	13.9
		315/80R22.5	18	154/150	M	TL	○	1075	311	9.00	9.00 - 9.75	14.7
20		9.00R20	14	140/137	L	TT	○	1016	259	7.00	6.50 - 7.50	13.0
		10.00R20	16	146/143	L	TT	○	1048	275	7.50	7.00 - 8.00	13.2
		11.00R20	16	150/147	L	TT	○	1074	289	8.00	7.50 - 8.50	13.9
19.5	70	* 245/70R19.5		136/134	J	TL	○	844	242	7.50	6.75 - 7.50	12.5
		* 245/70R19.5		136/134	M	TL	○	844	242	7.50	6.75 - 7.50	12.5
18		* 7.50R18	14	127/125	L	TT	○	879	213	6.00	6.00 - 6.50	12.0
		7.50R16	14	122/120	L	TT	○	803	215	6.00	5.50 - 6.00	11.5
16		7.50R16	14	123/121	L	TT	○	804	215	6.00	5.50 - 6.00	11.3
		8.25R16	14	128/126	L	TT	○	850	223	6.50	6.00 - 6.50	11.8
		10.00R15	18	148/145	K	TT	○	918	272	7.50	7.00 - 8.00	12.5
15		10.00R15	18	148/145	F	TT	○	918	272	7.50	7.00 - 8.00	12.5

* SP160RS

SP 341

ON ROAD / All-position

- 4-rib pattern designed for all position use.
- Demonstrates excellent wet traction performance.



SP 341

Rim (inch)	Aspect ratio (%)	Tire Size	Ply Rating	Load Index	Speed Symbol	TL or TT	E-No.	Overall Diam. (mm)	Section Width (mm)	Measuring (inch)	Rim Width Approved (inch)	Tread Depth (mm)
17.5	75	235/75R17.5		132/130	M	TL	○	804	234	6.75	6.75 - 7.50	14.5
		9.5R17.5		129/127	M	TL	○	843	240	6.75	6.00 - 6.75	14.5

SP 171

ON ROAD / All-position

- This all wheel position tire also has a reinforced bead structure to improve durability.
- A compound designed to provide a more wear-resistant tread.



SP 171

Rim (inch)	Aspect ratio (%)	Tire Size	Ply Rating	Load Index	Speed Symbol	TL or TT	E-No.	Overall Diam. (mm)	Section Width (mm)	Measuring (inch)	Rim Width Approved (inch)	Tread Depth (mm)
22.5		11R22.5		148/145	L	TL	○	1052	275	8.25	7.50 - 8.25	14.7
20		10.00R20	16	146/143	K	TT	○	1049	281	7.50	6.50 - 8.00	14.7
		10.00R20		147/143	L	TT	○	1049	281	7.50	6.50 - 8.00	14.7

SP 521

ON ROAD / All-position

- Its deeper tread depth and rigid tread pattern provide longer mileage and better wet performance for all position service.
- Recommended for local highway use, especially for city bus, garbage truck and cement mixer.



SP 521

Rim (inch)	Aspect ratio (%)	Tire Size	Ply Rating	Load Index	Speed Symbol	TL or TT	E-No.	Overall Diam. (mm)	Section Width (mm)	Measuring (inch)	Rim Width Approved (inch)	Tread Depth (mm)
22.5		11R22.5	16	148/145	J	TL	○	1054	283	8.25	7.50 - 8.25	16.5/18.5
17.5	80	225/80R17.5		123/122	L	TL	○	811	218	6.75	6.00 - 6.75	15.5
19.5	70	265/70R19.5		140/138	J	TL	○	877	259	7.50	6.75 - 7.50	16.1

SP 502

ON ROAD / All-position

- All-position tire designed for on road service.
- The grooves are designed to prevent stone retention and irregular wear.



Rim (inch)	Aspect ratio (%)	Tire Size	Ply Rating	Load Index	Speed Symbol	TL or TT	E-No.	Overall Diam. (mm)	Section Width (mm)	Measuring (inch)	Rim Width Approved (inch)	Tread Depth (mm)
19.5	70	265/70R19.5	18	143/141	J	TL	○	871	253	7.50	6.75 - 8.25	14.4

SP 322

ON-OFF ROAD / All-position

- An all-position tire for general use in Middle East countries.
- Unique 4-rib pattern and special tread compound ensure good performance in these regions.



SP 322

Rim (inch)	Aspect ratio (%)	Tire Size	Ply Rating	Load Index	Speed Symbol	TL or TT	E-No.	Overall Diam. (mm)	Section Width (mm)	Measuring (inch)	Rim Width Approved (inch)	Tread Depth (mm)
24	95	** 325/95R24		162/160	K	TL(TT)	○	1215	314	9.00	8.50 - 10.00	12.9
		* 12.00R24	18	156/153	K	TT	○	1215	316	8.50	8.00 - 9.00	12.9
		* 12.00R24	20	160/156	K	TT	○	1214	316	8.50	8.00 - 9.00	12.9
22.5	80	315/80R22.5		154/150	M	TL	○	1078	314	9.00	9.00 - 9.75	16.6z

* SP322★ ** SP322Prime α



SP 322 *



SP 322 PRIME α

SP 571

ON-OFF ROAD / All-position

- This all-wheel position tire for ordinary highway usage is well suited to mid and short distance vehicles, designed to give longer life with a reinforced bead structure that improves durability.



SP 571

Rim (inch)	Aspect ratio (%)	Tire Size	Ply Rating	Load Index	Speed Symbol	TL or TT	E-No.	Overall Diam. (mm)	Section Width (mm)	Measuring (inch)	Rim Width Approved (inch)	Tread Depth (mm)
24	95	325/95R24		162/160	K	TL(TT)	○	1222	319	8.25	7.50 - 9.00	16.7
		12.00R24		160/156	K	TT	○	1222	319	8.50	8.00 - 9.00	16.7
22.5	80	275/80R22.5	18	149/146	K	TL	○	1026	283	8.25	7.50 - 9.00	17.4
		295/80R22.5	18	152/148	K	TL	○	1059	307	9.00	8.25 - 9.00	18.8
		315/80R22.5	20	156/150	K	TL	○	1077	314	9.00	9.00 - 9.75	16.1
		11R22.5	16	148/145	L	TL	○	1059	278	8.25	7.50 - 8.25	17.5
		12R22.5	18	152/149	K	TL	○	1095	308	9.00	8.25 - 9.00	18.3
		13R22.5		154/150	K	TL	○	1122	315	9.75	9.00 - 9.75	17.8
20		10.00R20	16	147/143	K	TT	○	1059	282	7.50	7.00 - 7.50VM	17.5
		11.00R20	16	150/147	K	TT	○	1092	302	8.00	7.50 - 8.50VM	18.3
		12.00R20	18	154/150	K	TT	○	1122	313	8.50	8.00 - 9.00	16.7
17.5	75	215/75R17.5		126/124	L	TL	○	774	212	6.00	6.00 - 6.50	14.4
		225/80R17.5		123/122	L	TL	○	806	221	8.25	7.50 - 9.00	13.2
16		7.50R16	14	123/121	L	TT	○	808	215	6.00	5.50 - 6.50	13.2

SP 580A

ON-OFF ROAD / All-position

- Utilizes a rib-lug pattern with superior uneven wear resistance.



SP 580

Rim (inch)	Aspect ratio (%)	Tire Size	Ply Rating	Load Index	Speed Symbol	TL or TT	E-No.	Overall Diam. (mm)	Section Width (mm)	Measuring (inch)	Rim Width Approved (inch)	Tread Depth (mm)
22.5		11R22.5	16	148/145	K	TL	○	1061	281	8.25	7.50 - 8.25	15.8/18.0
		12R22.5	16	152/148	K	TL	○	1086	300	9.00	8.25 - 9.00	15.8/18.0
20		10.00R20	16	146/143	K	TT	○	1061	280	7.50	7.00 - 8.00	15.8/18.0
		11.00R20	16	150/147	K	TT	○	1086	294	8.00	7.50 - 8.50	15.8/18.0

SP 831

ON-OFF ROAD / All-position

- All-position tire designed for on road service with limited off road use.
- The unique 5-rib tread wears evenly and the grooves are designed to prevent stone retention.



SP 831

Rim (inch)	Aspect ratio (%)	Tire Size	Ply Rating	Load Index	Speed Symbol	TL or TT	E-No.	Overall Diam. (mm)	Section Width (mm)	Measuring (inch)	Rim Width Approved (inch)	Tread Depth (mm)
22.5		11R22.5	16	148/144	K	TL		1053	280	8.25	7.50 - 8.25	15.6
		12R22.5	16	152/148	L	TL		1087	292	9.00	8.25 - 9.00	16.4
20		10.00R20	16	146/143	K	TT	○	1053	280	7.50	7.00 - 8.00	15.6
		11.00R20	16	150/147	K	TT		1087	297	8.00	7.50 - 8.50	16.4

SP 581

ON-OFF ROAD / All-position

- All-position tread pattern enhances wet grip in both on and off road operations.
- Special tread compound increases cut and chipping resistance.



SP 581

Rim (inch)	Aspect ratio (%)	Tire Size	Ply Rating	Load Index	Speed Symbol	TL or TT	E-No.	Overall Diam. (mm)	Section Width (mm)	Measuring (inch)	Rim Width Approved (inch)	Tread Depth (mm)
22.5	70	275/70R22.5	16	148/145	K	TL	○	970	281	8.25	7.50 - 8.25	18.0
	80	295/80R22.5	16	152/148	K	TL	○	1059	305	9.00	8.25 - 9.00	18.6
		315/80R22.5	20	152/148	K	TL	○	1085	313	9.00	9.00 - 9.75	19.1
		315/80R22.5		154/150	K	TL	○	1085	312	9.00	9.00 - 9.75	18.9

STE

ON-OFF ROAD / All-position

- An all-position tire designed especially for Middle Eastern countries, with a durable construction through a heat-resistant compound.



Rim (inch)	Aspect ratio (%)	Tire Size	Ply Rating	Load Index	Speed Symbol	TL or TT	E-No.	Overall Diam. (mm)	Section Width (mm)	Measuring (inch)	Rim Width Approved (inch)	Tread Depth (mm)
24		* 12.00R24	18	156/153	K	TT	○	1215	311	8.50	8.00 - 9.00	15.8
20		11.00R20	16	150/147	K	TT	○	1087	282	8.00	7.50 - 8.50	15.8
		12.00R20	18	154/151	K	TT	○	1123	297	8.50	8.00 - 9.00	16.3

* STE★

SP 811

ON-OFF ROAD / All-position

- Designed for use in any position, on and limited off road.
- Special tread compound provides outstanding cut and wear resistance.



Rim (inch)	Aspect ratio (%)	Tire Size	Ply Rating	Load Index	Speed Symbol	TL or TT	E-No.	Overall Diam. (mm)	Section Width (mm)	Measuring (inch)	Rim Width Approved (inch)	Tread Depth (mm)
20		9.00R20	14	141/139	K	TT	○	1021	264	7.00	6.50 - 7.50	14.4
		12.00R20	18	154/151	K	TT	○	1128	305	8.50	8.00 - 9.00	10.6/16.3

SP 231A

ON-OFF ROAD / Trailer

- A wide base tire for on road service with limited off road use.
- It works well where more traction performance is required.



SP 231

Rim (inch)	Aspect ratio (%)	Tire Size	Ply Rating	Load Index	Speed Symbol	TL or TT	E-No.	Overall Diam. (mm)	Section Width (mm)	Measuring (inch)	Rim Width Approved (inch)	Tread Depth (mm)
22.5	65	385/65R22.5	18	160	K	TL	○	1076	376	11.75	11.75 - 12.25	15.8
		425/65R22.5	20	165	K	TL	○	1125	418	13.00	13.00 - 14.00	16.1
		445/65R22.5	20	168	K	TL	○	1155	447	14.00	13.00 - 14.00	16.5

SP 281

ON-OFF ROAD / Trailer

- An all-position tire designed for on and off road operations.



SP 281

Rim (inch)	Aspect ratio (%)	Tire Size	Ply Rating	Load Index	Speed Symbol	TL or TT	E-No.	Overall Diam. (mm)	Section Width (mm)	Measuring (inch)	Rim Width Approved (inch)	Tread Depth (mm)
22.5	65	385/65R22.5	20	160(158)	K(L)	TL	○	1089	381	11.75	11.75 - 12.25	19.2
		425/65R22.5	20	165	K	TL	○	1130	422	12.25	12.25 - 14.00	19.2
		445/65R22.5	20	168	K	TL	○	1159	454	13.00	13.00 - 14.00	19.2

SP 925

OFF ROAD / Drive

- SP925 is an off-road tire designed for drive axle use that provides excellent traction and durability with good retread ability.
- The aggressive extra deep tread with a lug type pattern is especially suited to vehicles such as construction vehicles and dump trucks for heavy work including building sites.
- The special tread compound provides outstanding cut and chip resistance.



SP925

Rim (inch)	Aspect ratio (%)	Tire Size	Ply Rating	Load Index	Speed Symbol	TL or TT	E-No.	Overall Diam. (mm)	Section Width (mm)	Measuring (inch)	Rim Width Approved (inch)	Tread Depth (mm)
24	95	325/95R24		162/160	K	TT	○	1231	310	9.00	8.50 - 10.00	21.4
22.5	80	275/80R22.5	18	149/146	K	TL	○	1029	282	8.25	7.50 - 9.00	19.4
		295/80R22.5	18	152/148	K	TL	○	1061	306	9.00	8.25 - 9.00	20.0
		315/80R22.5	20	156/150	K	TL	○	1096	315	9.00	9.00 - 9.75	24.2
		13R22.5		156/150	K	TL	○	1137	320	9.75	9.00 - 9.75	24.1

SP 931

OFF ROAD / Drive

- SP931 is designed to deliver extra long tread life and enhanced traction in the toughest conditions, Such as mud, sand, and rough roads.
- Having extra deep groove, suitable for garbage trucks and other vehicles that require off applications.



SP 931

Rim (inch)	Aspect ratio (%)	Tire Size	Ply Rating	Load Index	Speed Symbol	TL or TT	E-No.	Overall Diam. (mm)	Section Width (mm)	Measuring (inch)	Rim Width Approved (inch)	Tread Depth (mm)
22.5		11R22.5	16	148/145	G	TL		1072	284	8.25	7.50 - 8.25	24.8
		11R22.5	16	148/145	J	TL		1072	284	8.25	7.50 - 8.25	24.8
		12R22.5	16	152/148	J	TL	○	1102	296	9.00	8.25 - 9.00	24.8
		13R22.5		154/150	K	TL	○	1138	318	9.75	9.00 - 9.75	24.8
20		10.00R20	16	147/143	G	TT		1074	281	7.50	7.00 - 8.00	24.8
		11.00R20		150/147	G	TT		1104	298	8.00	7.50 - 8.50	24.8

SP 225

OFF ROAD / Drive

- Designed for drive axle use, mainly off road.
- Offers excellent traction on both dry and wet surfaces.



Rim (inch)	Aspect ratio (%)	Tire Size	Ply Rating	Load Index	Speed Symbol	TL or TT	E-No.	Overall Diam. (mm)	Section Width (mm)	Measuring (inch)	Rim Width Approved (inch)	Tread Depth (mm)
24		12.00R24	18	156/153	K	TT	○	1212	304	8.50	8.00 - 9.00	13.0/18.2

SAFETY INFORMATION

for PCR / 4x4 / LTR / TRUCK & BUS TIRES

Any tire, no matter how well constructed, may fail in use as a result of punctures, impact damage, improper inflation, overloading, excessive wear or other use conditions.

All tires eventually wear out. A worn or damaged tire can present a safety hazard, and a tire failure can lead to an accident that may result in property damage, injuries or death.

To reduce the risk of tire failure we advise as follows:

- 1 CHECK** the air pressure in all your tires frequently, including the spare, when tires are cool. (when your vehicle has been driven less than a few kilometers or after being stopped for more than a hour) Don't reduce air pressure when tires are hot from driving; use a tire gauge to check the pressure and maintain it at the level recommended by vehicle manufacturer.
- 2 NEVER** overload your tires. The maximum load carrying capability of your tire is moulded on the sidewall of each tire.
- 3 CHECK** your tires regularly for scrapes, bulges, separations, cuts, snags or embedded foreign objects. Show the tires to your dealer immediately if any such condition is discovered.
- 4 NEVER** operate your vehicle in excess of lawful speeds, speeds suitable for the driving conditions or at speeds greater than recommended for the tire you are using.
- 5 AVOID** driving over objects that may damage the tires through impact or cutting such as potholes, glass, metal, etc.
- 6 NEVER** drive on bald tires. Always remove tires from service and replace them before they reach the remaining 1.6mm of the tire depth. Tread wear indicators are built into the tires to indicate when they are worn to 1.6mm. It is illegal to drive on tires with less than 1.6mm remaining tread depth.
- 7 DON'T** spin tires excessively on mud, snow, ice, etc. as this can cause tire damage, as well as axle failure.

IMPORTANT INFORMATION is moulded on the sidewall.

Among other information, the sidewall engraving contains the tyre size, load index, maximum load and maximum pressure for that particular tyre.

Always follow the instructions and recommendations of the vehicle manufacturer, as contained in the vehicle Owner's Manual.

WARNING

SERIOUS INJURY OR DEATH MAY RESULT FROM EXPLOSION OF TYRE/RIM ASSEMBLY IF PROPER MOUNTING INSTRUCTIONS ARE NOT FOLLOWED.

- ONLY** specially trained persons should mount tires.
- ALWAYS** match rim diameter with appropriate tire size.
- NEVER** mount a tire on a cracked, bent, rusted or otherwise damaged rim or a rim which has been repaired.
- ALWAYS** make sure inside of tire is dry before mounting. Moisture in tire can damage casing.
- NEVER** put a flammable substance into a tire.
- ALWAYS** clean and lubricate the rim and tire beads before mounting the tire.
- ALWAYS** use an extension air hose with gauge and clip-on air chuck.
- ALWAYS** lock the wheel on the tire mounting machine, or place it in a safety cage when inflating.
- ALWAYS** inflate with dry air from compressor having a properly-working moisture filter.
- ALWAYS** stand clear, and **NEVER** lean on or reach over the tire/rim assembly when inflating.
- NEVER** inflate over 40 psi (275 kPa) to seat bead.
- ALWAYS** adjust tire pressure to the vehicle manufacturer's recommendations after beads are fully seated.
- ALWAYS** put winter tires on in a set of four, to your vehicle.

RECOMMENDATIONS ON TIRE STORAGE

- To avoid deterioration and discoloration, storage time must be minimized. Always follow the principle of "First In, First Out."
- Tires must be stored in clean conditions, free from exposure to sunlight or strong artificial light, heat, ozone and hydrocarbons.
- The storage area should be cool (preferably below 25°C), dry and moderately ventilated. Moist conditions should be avoided.
- Tires should be stored in a relaxed condition free from tension, compression or other deformation, since these may cause cracking or permanent distortion.

CORPORATE DATA

GUIDE TO PROVING GROUNDS

Sumitomo Rubber's tire proving grounds in Okayama, Asahikawa, Nayoro and Huntsville, USA support tire development through severe tests conducted in many kinds of roads of the world and in various driving conditions.

OKAYAMA Sumitomo Rubber Okayama Tire Proving Ground

This facility merges the Roads of the World. Sumitomo Rubber's Okayama Proving Ground reproduces the world's roads and a wide variety of driving conditions. The expansive site, with a total area of 1,000,000 square metres, is fully equipped with a 3,200metre main circuit, a handling & stability test track, wet roads, a noise and vibration test track, and tire noise evaluation devices, among many others. To provide drivers around the world with greater safety and comfort, the site plays an invaluable role in the research and development of high-performance tires that boast superior handling and refined comfort, and next generation tires including run-flat tires, electric car tires and ultra-lightweight tires.



ASAHIKAWA Sumitomo Rubber Asahikawa Tire Proving Ground

Asahikawa Proving Ground, specially designed for winter testing, is located in the city of Asahikawa in Hokkaido and boasts a total area of 210,000 square metres. The facility includes a 1,400metre main circuit and a variety of ice and packed snow surfaces, making it an important base of research and development for winter tires.



NAYORO Sumitomo Rubber Nayoro Tire Proving Ground

Nayoro Proving Ground, specially designed for winter testing, is located in the city of Nayoro in Hokkaido, and boasts a total area of 870,000 square metres. The facility includes a 2,200metre main circuit, and variety of ice and packed snow surfaces, making this an important base of research and development for winter tires.



HUNTSVILLE, USA USA Tire Proving Ground: Use for both motorcycle tire and four-wheel vehicles testing



OVERSEAS OFFICES



Sumitomo Rubber Middle East FZE.

Office No.5WA 118,
Dubai Airport Free Zone
P. O. Box 54901, Dubai, UAE
TEL: +971-4-2146959 FAX: +971-4-2146960

Sumitomo Rubber Middle East Jeddah branch c/o BINZAGR COMPANY

P. O. Box 54, Jeddah 21411 Saudi Arabia
TEL: +966-2-663-7327 FAX: +966-2-663-5522

Dunlop Tire CIS LLC

S. Ivana Franko str., 121108, Moscow,
Russian Federation
TEL: +7-495-663-2360 FAX: +7-495-663-2460

Sumitomo Rubber Asia (Tire) PTE. LTD.

1 Maritime Square #09-39 Harbourfront Centre Singapore
099253, Singapore
TEL: +65-6278-6975 FAX: +65-6278-4049

Sumitomo Rubber Latin America Limitada

Avenida Nueva Tajamar N° 183 Of. 601,
Las Condes, Santiago, Chile
TEL: +56-2-2901-5400